

Stand by:

The future is coming...

Honoring Dr Martin Luther King, Jr. Building Healthy Neighborhoods and People



Thank You! Muchas Gracias!

- **Sacramento Housing and Redevelopment Agency**
- **The City of Sacramento**
- **The Oak Park Neighborhood Association**
- **Christian Brothers High School**
- **The Bike Kitchen**
- **Members of Oak Park and the broader Sacramento Community**

Thanks to the Community!



Our Process

Design
Team

Mike

Student
from
American
Legion
High
School

David

Mogavero Notestine Associates



Glatting Jackson



Billy

**Billy's
Comput
er**

Chad

Alternate Street Design



Michael Wallwork,

Joe



Adrian



**J. Taylor
Associates**

**Mark Thomas
& Associates**

David



SFE Design



Paul

**Local
Government
Commission**



Michael

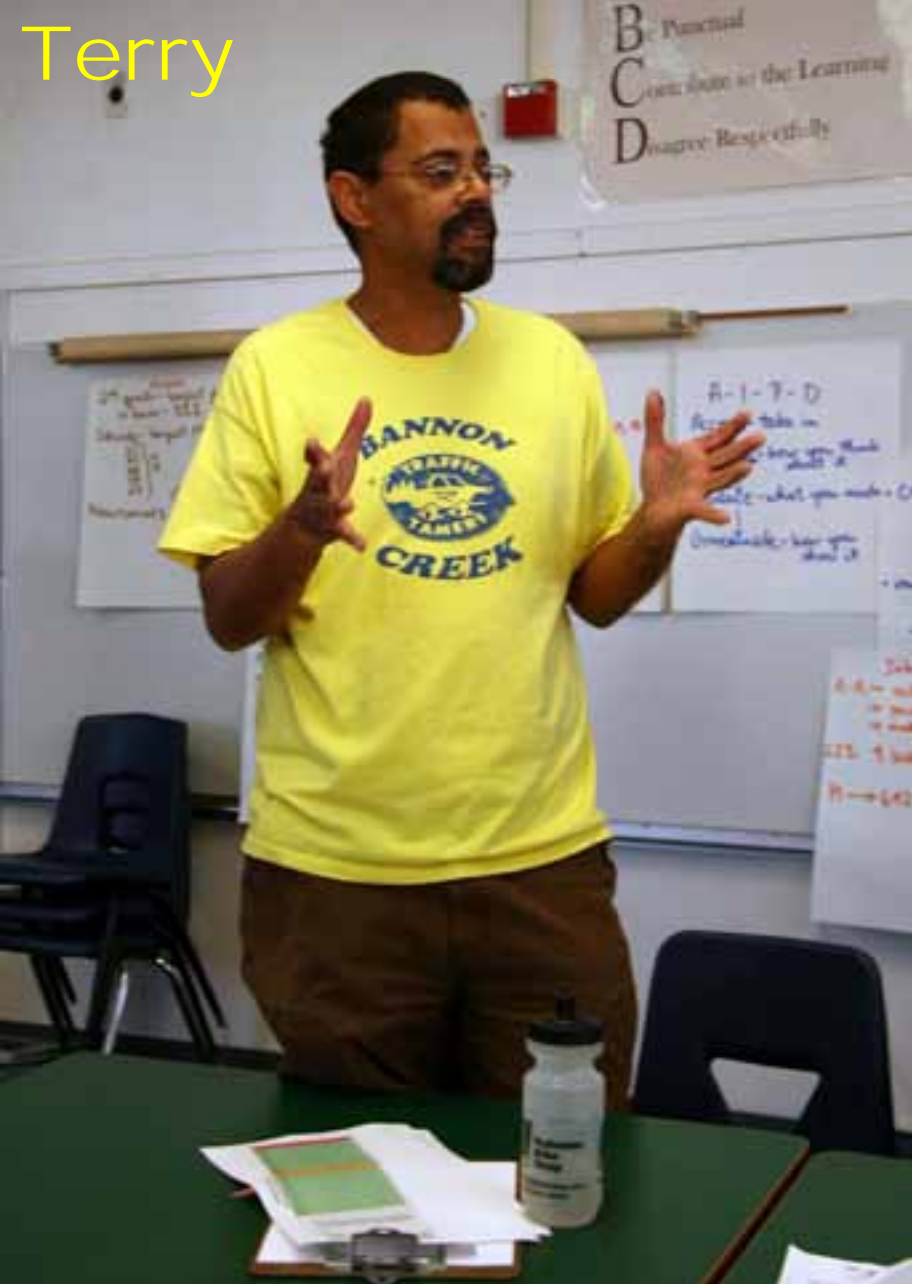
Livable Streets



Steve

**Seifel
Consulting**

Terry



Anne

WALKSacramento

Our Process

School Walking
Audits



American Legion High



Oak Ridge and
Keith B. Kenney
Elementary Schools





A great street is one that tells stories about its past, its present and the hopes for its future

...Hans Monderman



Conditions at schools

- **American Legion High School**
 - Walkabout
 - Safety problems at MLK and Broadway
 - McClatchy Park undesirables
- **Father Keith B. Kenny Elementary School**
 - Pick Up/Drop Off on Campus
 - About 50% Walk – Share access with Automobiles
 - Fences that create safety and security problems, lack esthetics and obscure visibility

Conditions at schools

- **Oak Ridge Elementary School**
 - About 50% Walk to Oak Ridge
 - Fences create safety and security problems, lack esthetics and obscure visibility
 - Great crossing guard, Ms. Horne
- **Christian Brother High School**
 - Most pick up/drop off on Campus
 - Almost 100% arrive by automobile
 - Accessing site creates congestion on MLK for short period

Our Process

Focus
Groups





Our Process

Walking
Audits







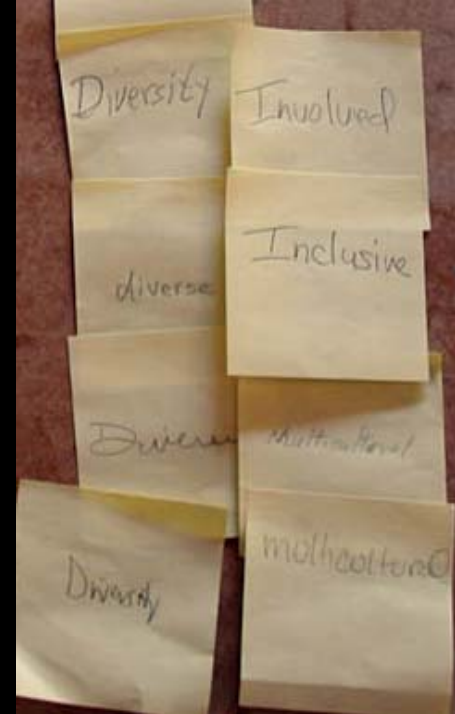
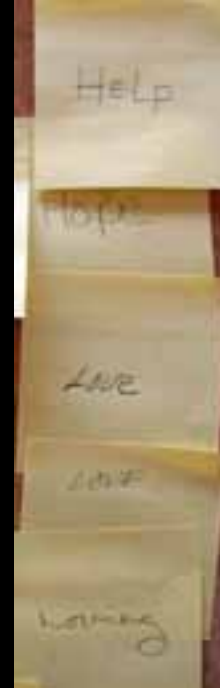
Our Process

Opening Workshop,
Prioritization Exercise
and Design Tables



Values

- Diversity
- Safety/Security
- Friends/Family
- Trees/Parks
- Neighbors/People
- Education
- Housing/Ownership



Safe walking/bike, full
of shops + well kept
homes.

Oak Park + M.K. Blvd Twenty Years from Now

An area of activity - people of all ages
Less autos, and more transit.
Trees shading the sidewalks and storefronts.
Stores and restaurants.
The fences are gone.

Community Vision

A place where ^{all} people come
to see Great Art + hear Great Music
(JAZZ)
Housing for all incomes

My Dream for M.K. Blvd 20 years from
today

- No fences up to the sidewalk
- No locked gates in front of churches
- No parking on retail doors and windows
- Mixed use + fill in place of vacant lots
- Tree canopy
- Green strip between 8-foot sidewalk + street
- Higher-visibility crosswalks + more of them
- Fresh produce displays in front of stores
- Pocket parks + more street furniture

Oak Park is a beautiful place to
be, an desirable place to live, + a
prosperous place to do business.
Someone wants to be there + people
from other cities will be up and a
best practice of sustainable community

Respectful to the people
Street Monument
Clean laws
Well-maintained
Wide sidewalks
TREES
Open areas
Park
Artwork w/meaning

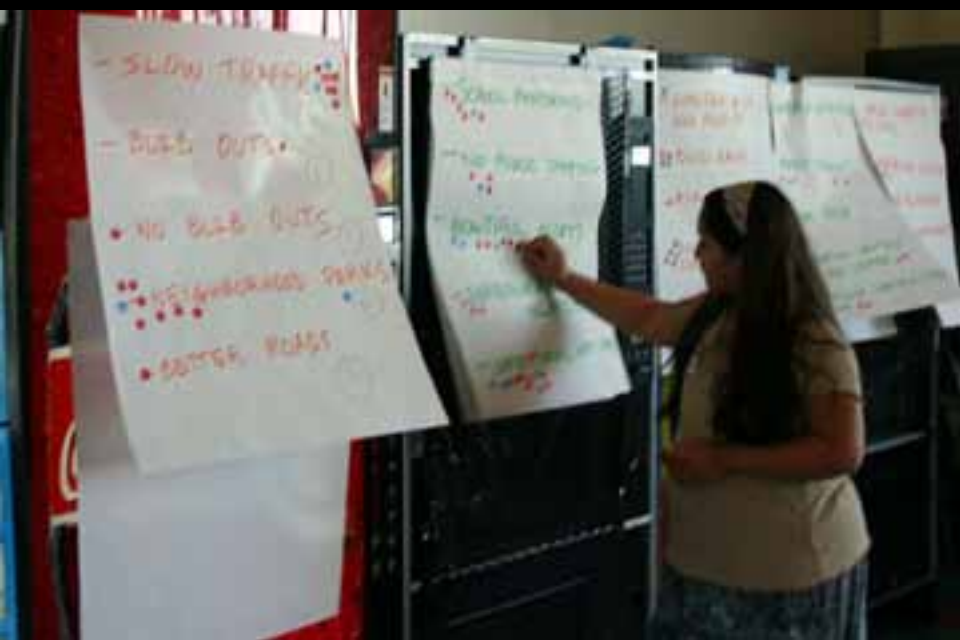


Community Vision



Ed Cox

Community Vision



BETTER CROSSWALKS (5)

PUBLIC ART / EDUC. (17)

LOCAL BUSINESS OWNERSHIP (10)

SECURITY (8)

LIGHTS (7) ~~(6)~~

LIBRARY (13)

SMART INFILL (9)

TREES (14)

CLEAN UP VACANT LOTS ~~(11)~~

WIDER SIDEWALKS (17)

ATTRACTIVE FENCES OR NONE (7) ~~(6)~~

Community Priorities

- 1) Public Art/Education (17)**
- 1) Wider Sidewalks (17)**
- 2) Library (15)**
- 3) Trees (14)**
- 4) Cafes/Social Hot Spots (12)**
- 5) Beautiful Alleys (11)**
- 5) Clean Up Vacant Lots (11)**
- 5) Upgrade Markets (11)**
- 6) Smart Infill (10)**
- 6) Neighborhood Parks (10)**

Our Process

Design Tables



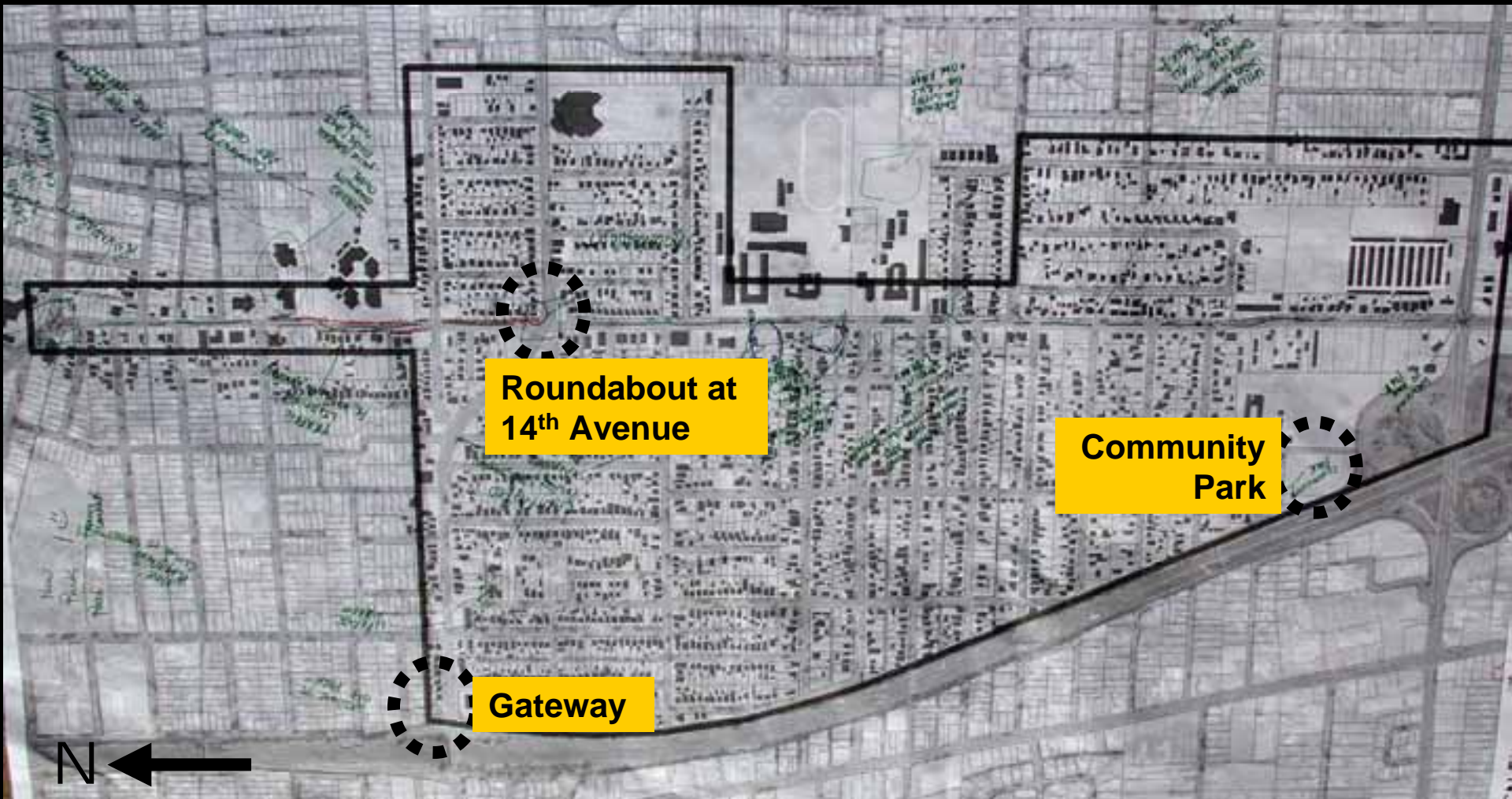






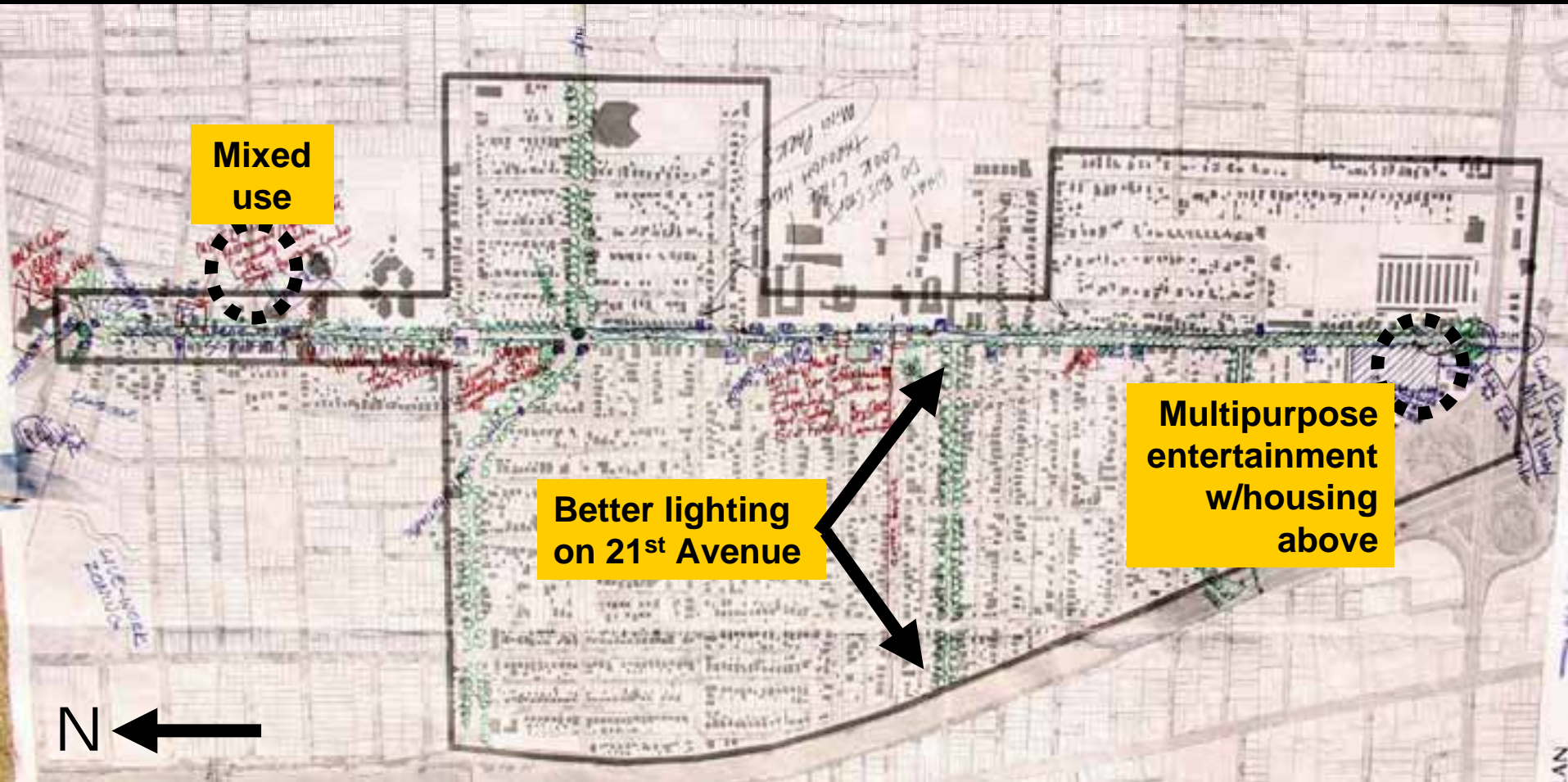


Table 1



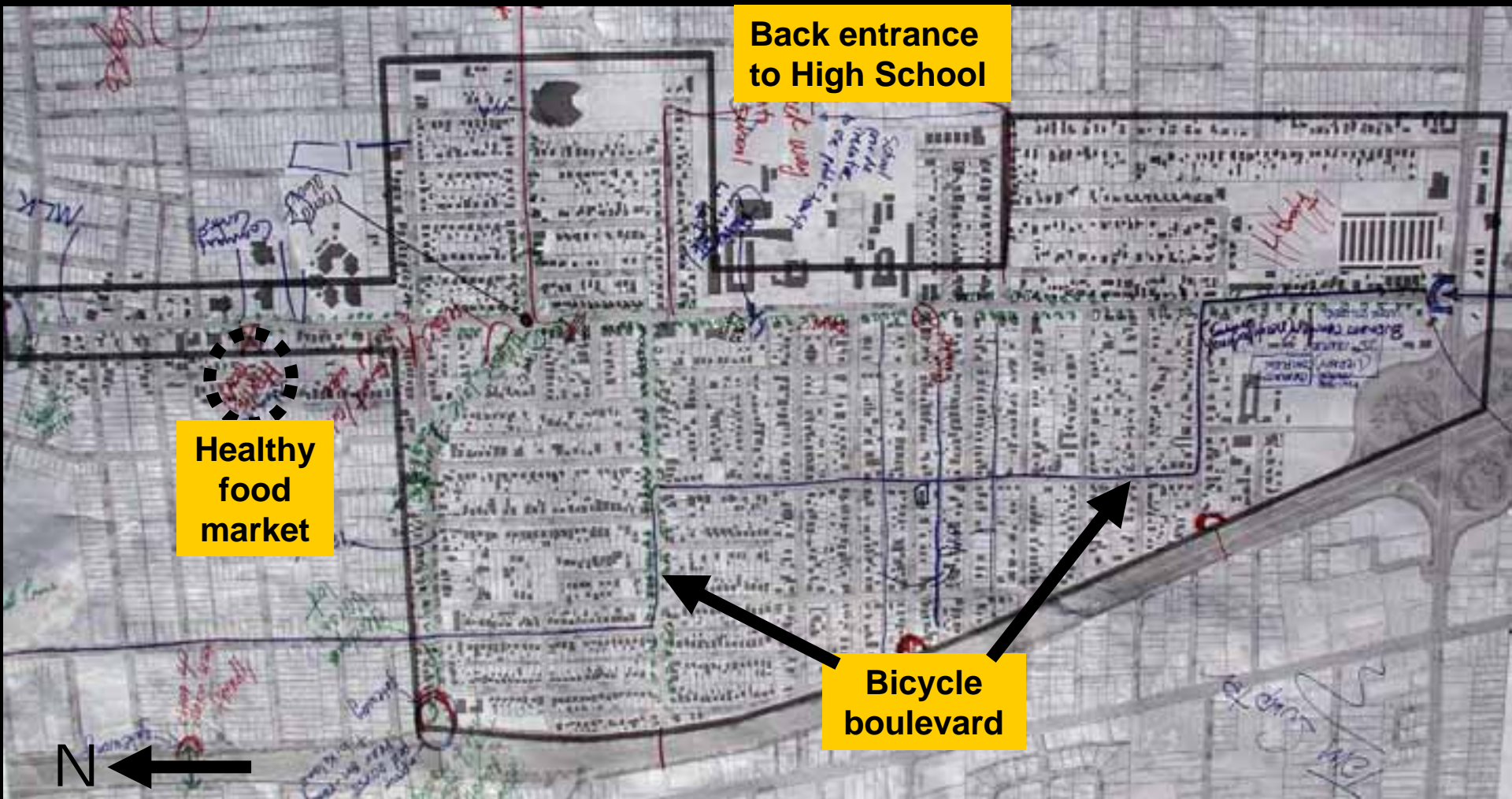
- Underground utilities
- Improve lighting

Table 2



- Wider sidewalks
- Public art
- Curb extensions
- Lots of trees

Table 3



- Wider sidewalks and trees
- Bicycle lanes
- Neighborhood shuttle

Table 4

Mixed Use

Back entrance to High School

Police substation

Traffic Calming

N

- Wider sidewalks

Table 4

Mixed Use

Back entrance to High School

Police substation

Traffic Calming

N

- Wider sidewalks

Table 4

Mixed Use

Back entrance to High School

Police substation

Traffic Calming

N

- Wider sidewalks

Table 4

Mixed Use

Back entrance to High School

Police substation

Traffic Calming

N ←

- Wider sidewalks

Table 4

Mixed Use

Back entrance to High School

Police substation

Traffic Calming

N ←

- Wider sidewalks

Table 4

Mixed Use

Back entrance to High School

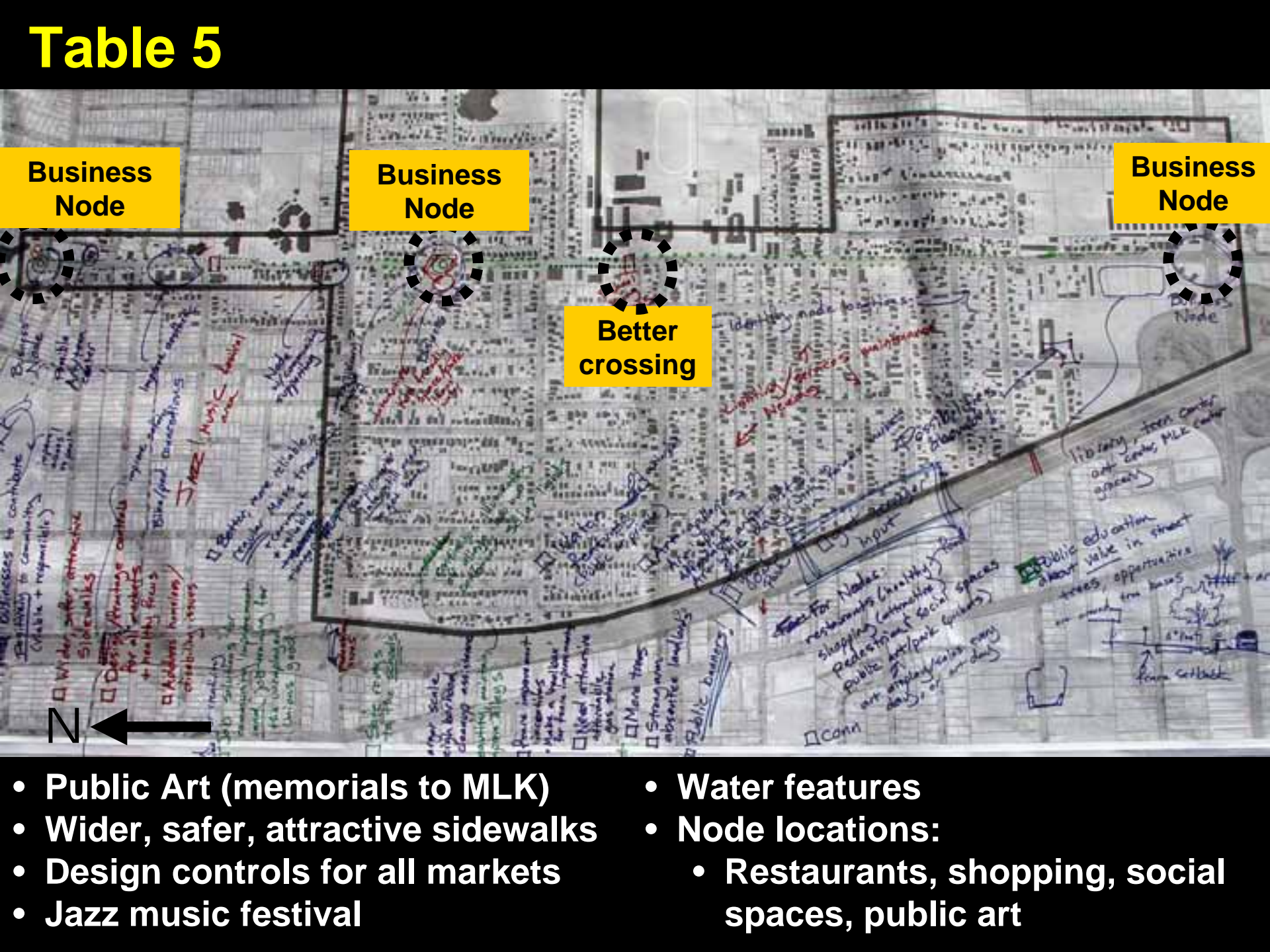
Police substation

Traffic Calming

N ←

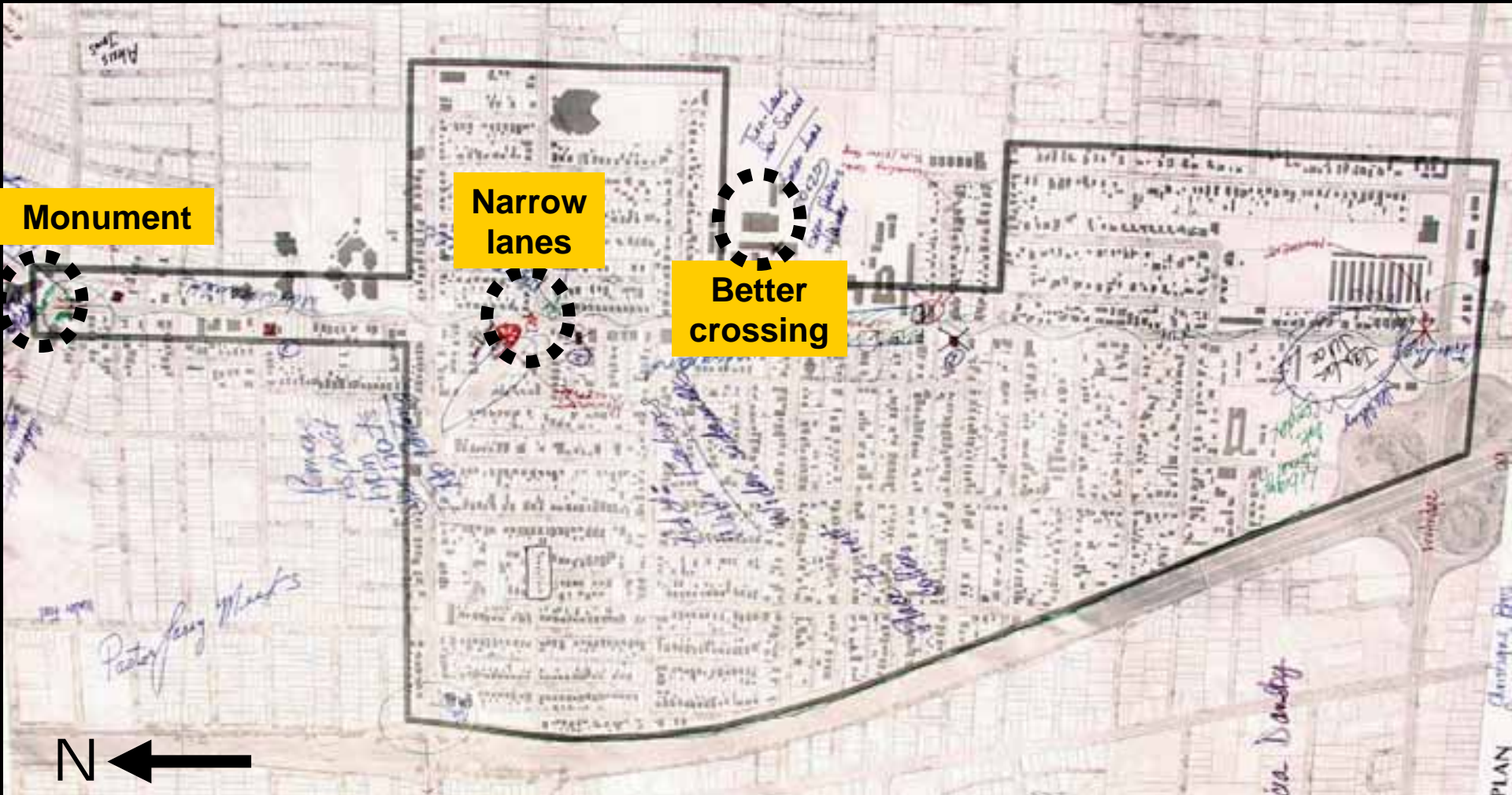
- Wider sidewalks

- # Table 4
-
- Mixed Use**
- Back entrance to High School**
- Police substation**
- Traffic Calming**
- N ←
- Wider sidewalks

[illegible]

- ## Table 5
-
- Business Node**
- Business Node**
- Better crossing**
- Business Node**
- Public Art (memorials to MLK)**
- Public Art (memorials to MLK)
 - Wider, safer, attractive sidewalks
 - Design controls for all markets
 - Jazz music festival
 - Water features
 - Node locations:
 - Restaurants, shopping, social spaces, public art

Table 6



- Wider sidewalks
- Places to rest, get coffee
- Water features

Our Process

After the Workshops
Were Over




Our Community

Assets



Every man must decide whether

he will walk in the light of creative altruism



or the darkness of destructive selfishness.

Martin Luther King, Jr.

Assets

- **Neighborhood Character**
 - Education Center
 - Community Center
 - County Service Center
 - Fire Station
 - Historic Context
- **Proximity to downtown and freeways**
- **Relatively well-connected**
- **Diversity**



Assets

- Mix of uses
- Opportunity sites
- Neighborhood organizations working with the City and others
- Finer grained neighborhoods
- Churches





Entrance to Oak Park, SACRAMENTO, Cal.

© 2002 BAC711



We must do more than survive ... we must thrive









Our Community

Challenges

Challenges

- **Making it More Walkable/Bicycle Friendly**
- **Low Homeownership**
- **Crime**
- **Housing Conditions**
- **Distance to Quality Grocery**
- **Minimal Local Serving Retail**
- **Lack of Parks**
- **Street/Sidewalk Maintenance**



Challenges

- **Infrastructure**
- **Alley Conditions**
- **Freeway Barrier**
- **Areas of Poor Connectivity**
- **Lack of Cultural Facilities**
- **Noxious Commercial Uses**



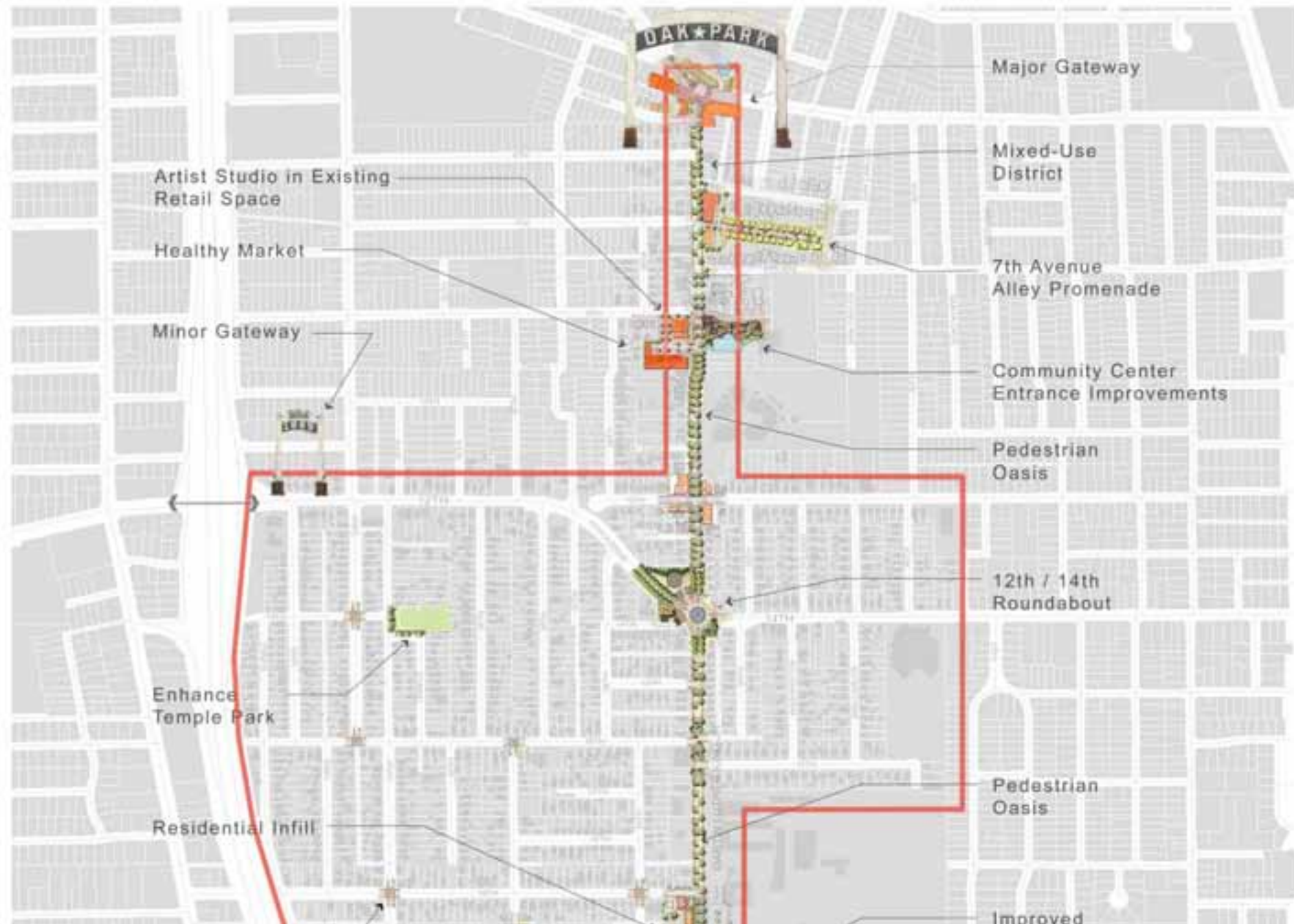












Residential Infill

Traffic Domes

Community
Infill Garden

Pocket Park

Community
Garden

Play Fields

Gateway
Building

Major Gateway

Residential
Oasis

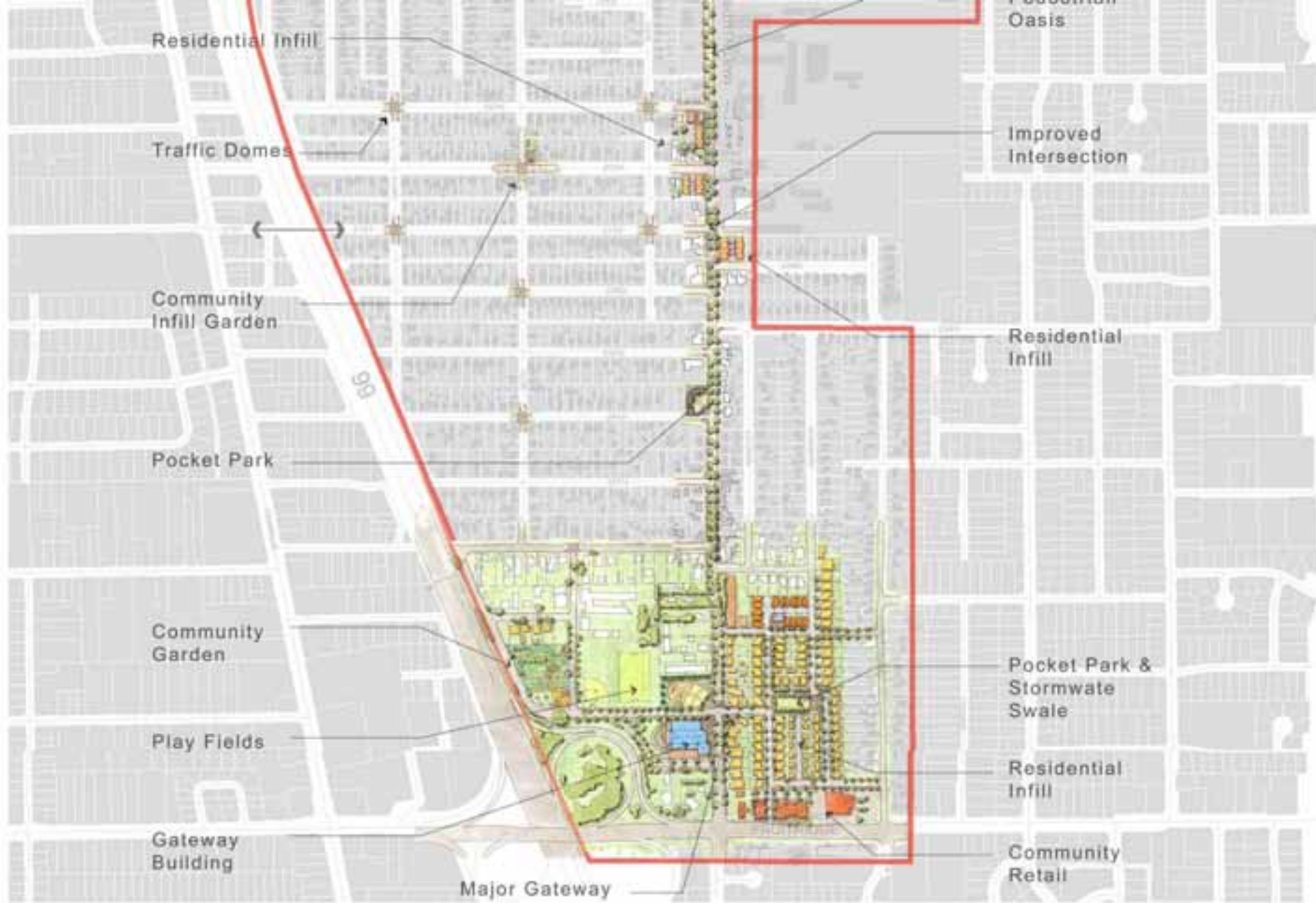
Improved
Intersection

Residential
Infill

Pocket Park &
Stormwater
Swale

Residential
Infill

Community
Retail









West Lafayette, Indiana (Home of Purdue University)

Hurley looking west near Greer Elementary School



Steve Price

Urban Advantage

Hurley looking west near Greer Elementary School



Steve Price

Urban Advantage

Hurley looking west near Greer Elementary School



Steve Price

Urban Advantage

Hurley looking west near Greer Elementary School



Steve Price

Urban Advantage

Connectivity

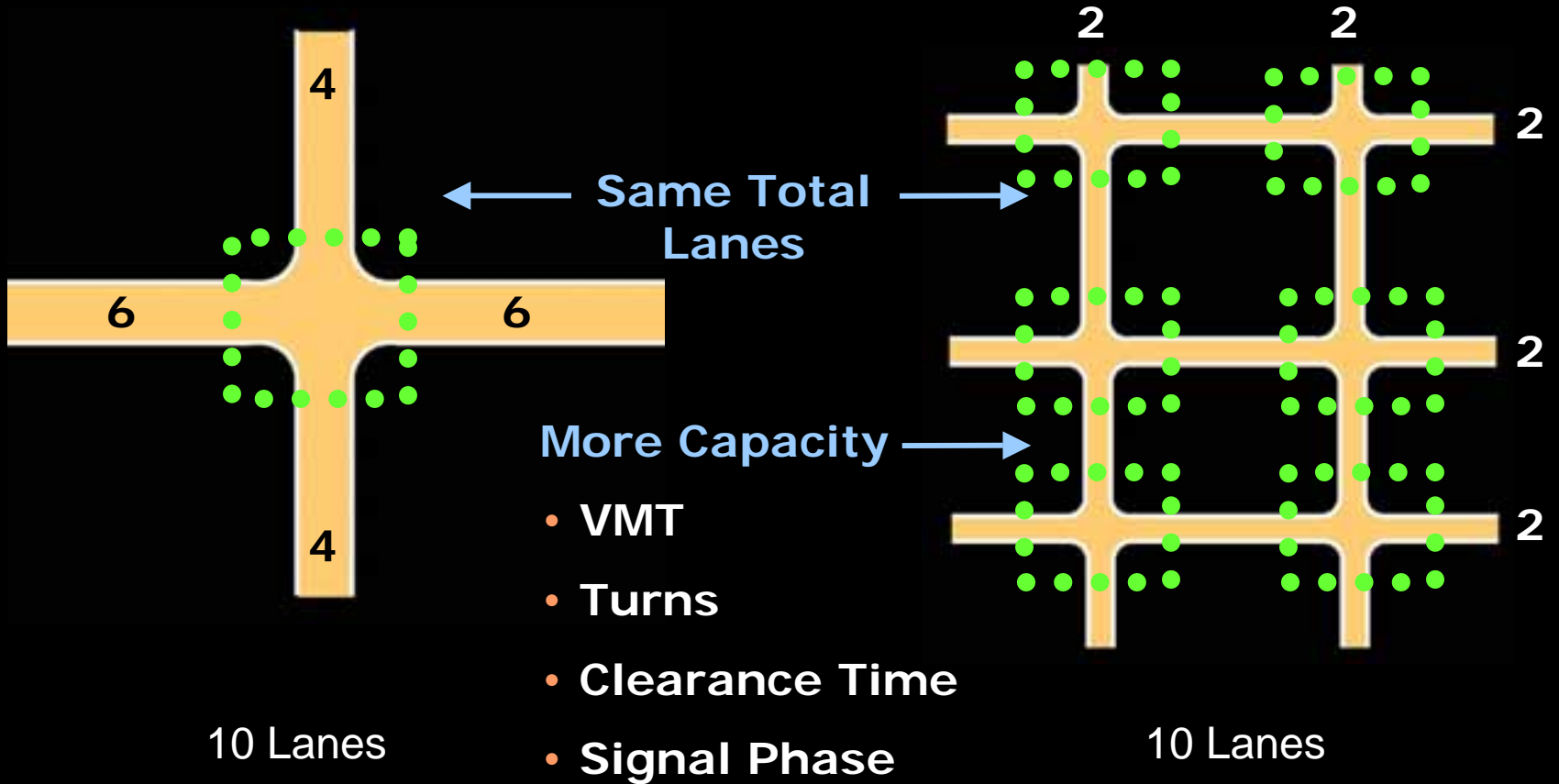


Savannah



Irvine

Network and Capacity

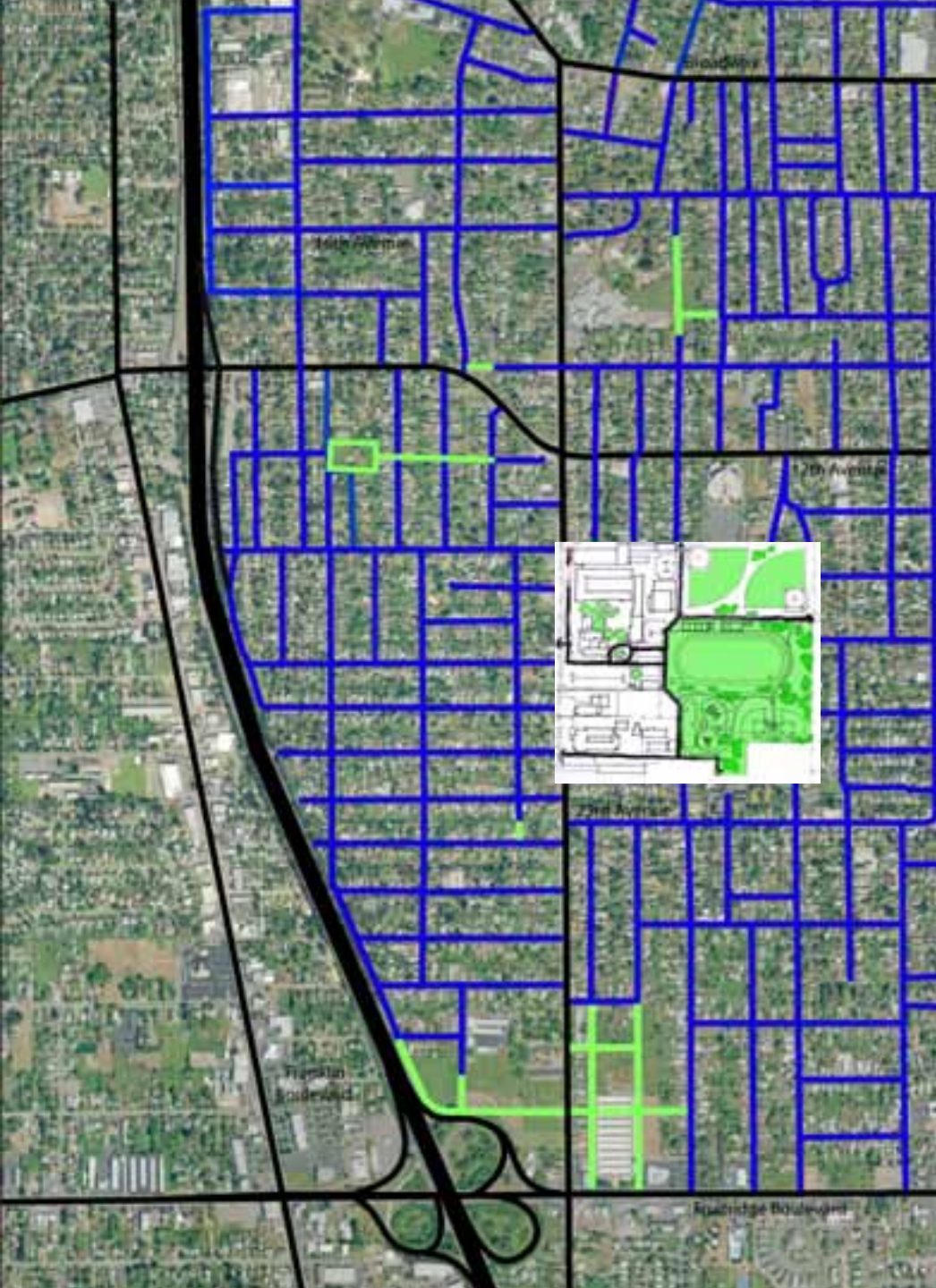


Poor Connectivity
Challenges walking and
creates significant traffic
congestion, especially
at intersections









Roadway Capacity



**1,800 vehicles
per hour
per lane**

**800 vehicles per hour
per lane**



Avenue Quality Performance Levels

Average Daily Traffic (ADT)



Well designed neighborhoods allow quality distribution of traffic. Good planning allows traffic volumes to stabilize in the "high performance" range. When land use patterns or other auto-dependency become extreme full capacity Avenues are uncomfortable but can maintain quality. Communities should avoid "Biggie Sizing" roads. With higher volumes quality is retained with extra measures.

Quality Level

Comfortable

High Performance

Approaching Full Capacity

Volume

3,000

6,000

9,000

12,000

15,000

18,000

21,000

Gaps: Cars per minute each direction

3

5

7.5

10

12.5

15

18

Example Locations



Mill Creek
Washington



Chico
California



Santa Monica
California



Greenville
South Carolina



Mercer Island
Washington



Seattle
Washington



Orlando
Florida

Note: Photos depict likely features or conditions, not actual peak ADT's.

Observations and Likely Treatments

Gaps: Frequent
Controls: Rare
Crossings: Informal
Delays: Very Rare
Parking: Preserve Sight Lines
Bike Lanes: YES

Gaps: Frequent
Controls: Rare
Crossings: Informal or markings
Delays: Rare
Parking: Preserve Sight Lines
Bike Lanes: YES

Gaps: Convenient
Controls: Roundabouts or Four Way
Crossings: Markings
Delays: Occasional
Parking: Preserve Sight Lines
Bike Lanes: YES

Gaps: Common
Controls: Roundabouts or Four Way
Crossings: Medians and Bulbouts
Delays: Moderate
Parking: Inset
Bike Lanes: YES

Gaps: Most hours
Controls: Roundabouts or Signals
Crossings: Medians and Bulbouts
Delays: Common
Parking: Inset
Bike Lanes: YES

Gaps: Infrequent
Controls: Roundabouts or Signals
Crossings: Medians and Bulbouts
Delays: Many hours
Parking: Inset
Bike Lanes: YES

Gaps: Steady Traffic
Controls: Roundabouts or Signals
Crossings: Medians and Bulbouts
Delays: Expected
Parking: Inset
Bike Lanes: YES

MLK Blvd. Broadway

Road Diets



River Avenue, Santa Cruz, CA — Before



River Avenue, Santa Cruz, CA — After

Road Diets in Seattle

(4 to 3 lanes)

Roadway	Date	ADT	ADT	Collision
Location	Change	Before	After	Reduction
Greenwood Ave N	Apr-95	11872	12427	24 to 10 58%
N 80th St to N 50th				
N 45th Street	Dec-72	19421	20274	45 to 23 49%
Wallingford Area				
8th Ave NW	Jan-94	10549	11858	18 to 7 61%
Ballard Area				
Martin Luther King Jr W	Jan-94	12336	13161	15 to 6 60%
North of I 90				
Dexter Ave N	Jun-91	13606	14949	19 to 16 59%
Queen Ann Area				
24th Ave NW	Oct-95	9727	9754	14 to 10 28%
NW 85th to NW 65th				

Fences





**Four Foot
Semi-Transparent
Fence**

12 Foot Setback

**Six to Eight Foot
Privacy Fence**

Permitted materials:

All materials shall be durable and attractive

New and recycled wood

Wrought Iron and other metal materials

Decorative stone

Cor-ten or other decorative metal

Columns of concrete or brick

Articulation encouraged





Security/Safety





Complete Streets

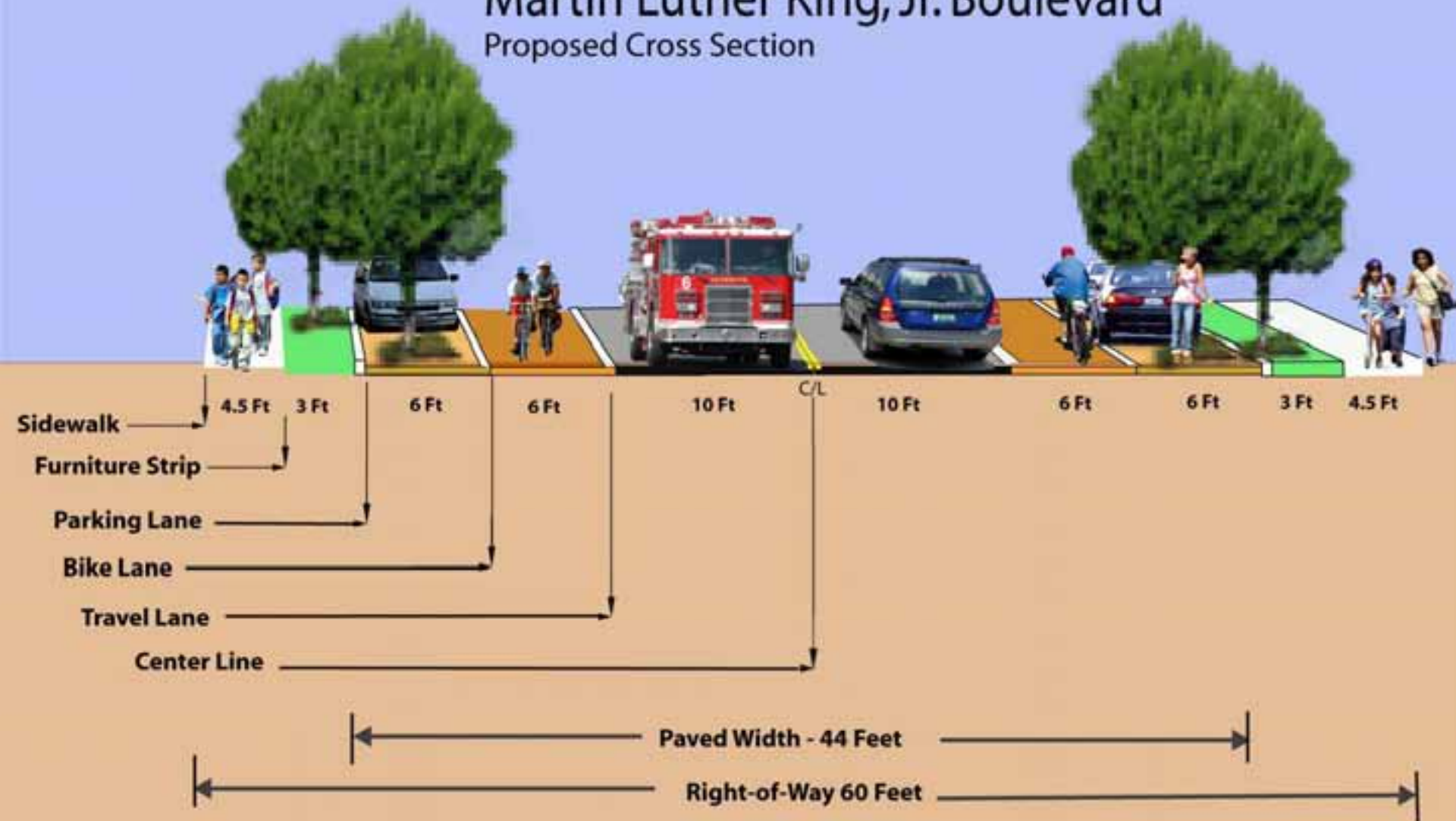




A walkable place is ... Comfortable

Martin Luther King, Jr. Boulevard

Proposed Cross Section



Intersections



Benefits of curb extensions















Midblock Crossings









**Alleys/
Lanes**



Trees





Lighting/ Banners





Celebrate
Martin Luther King, Jr.
Boulevard





Parks/Plazas



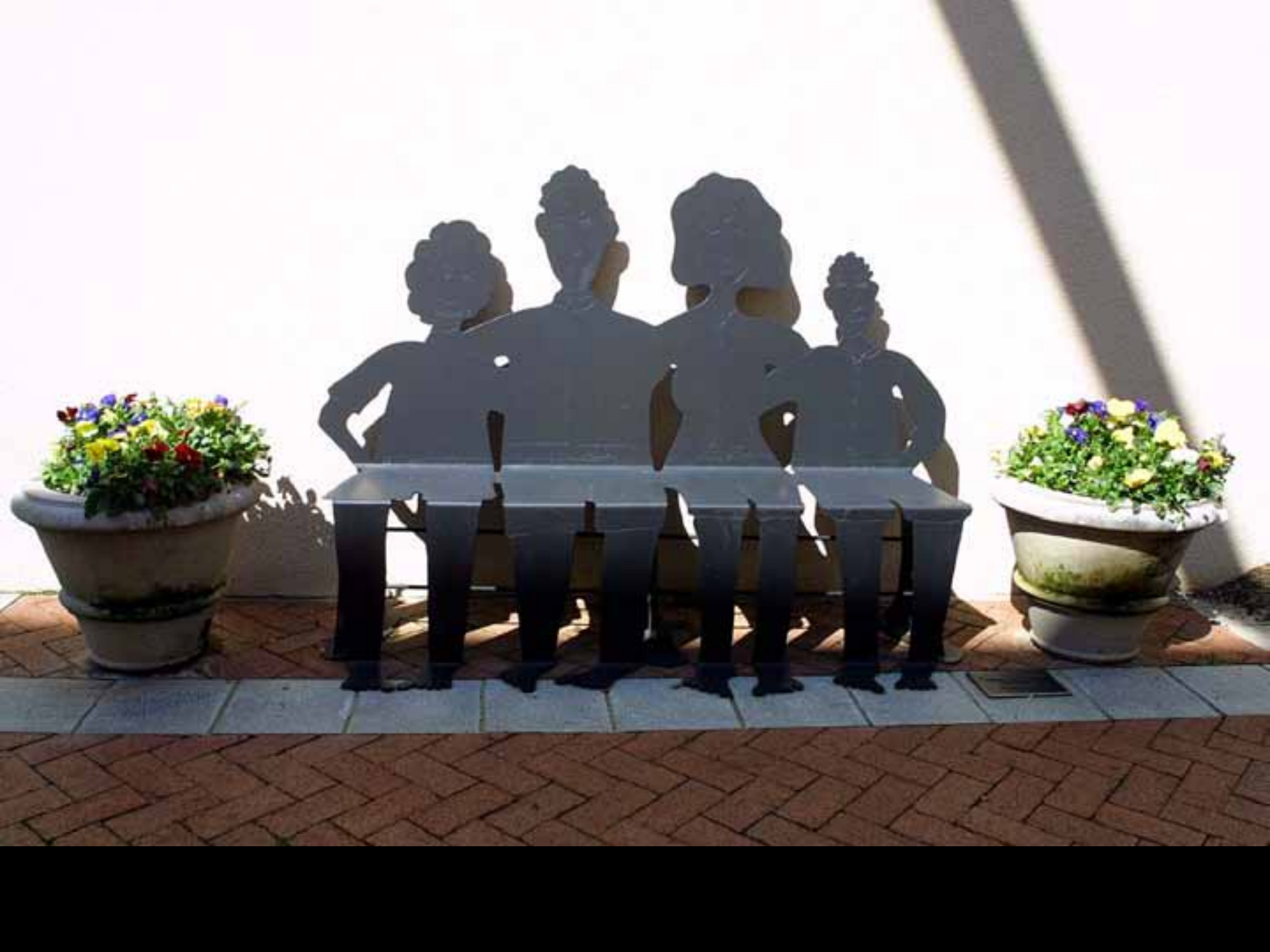
Our parks and plazas are our places of play, discovery, relaxation. Our parks and plazas are where our best new ideas are born. Parks provide our open air, our solitude in the morning our dances of delight and silliness at midday ... and, if







Places to Sit







Cafés



Claremont, CA

Monterey, California

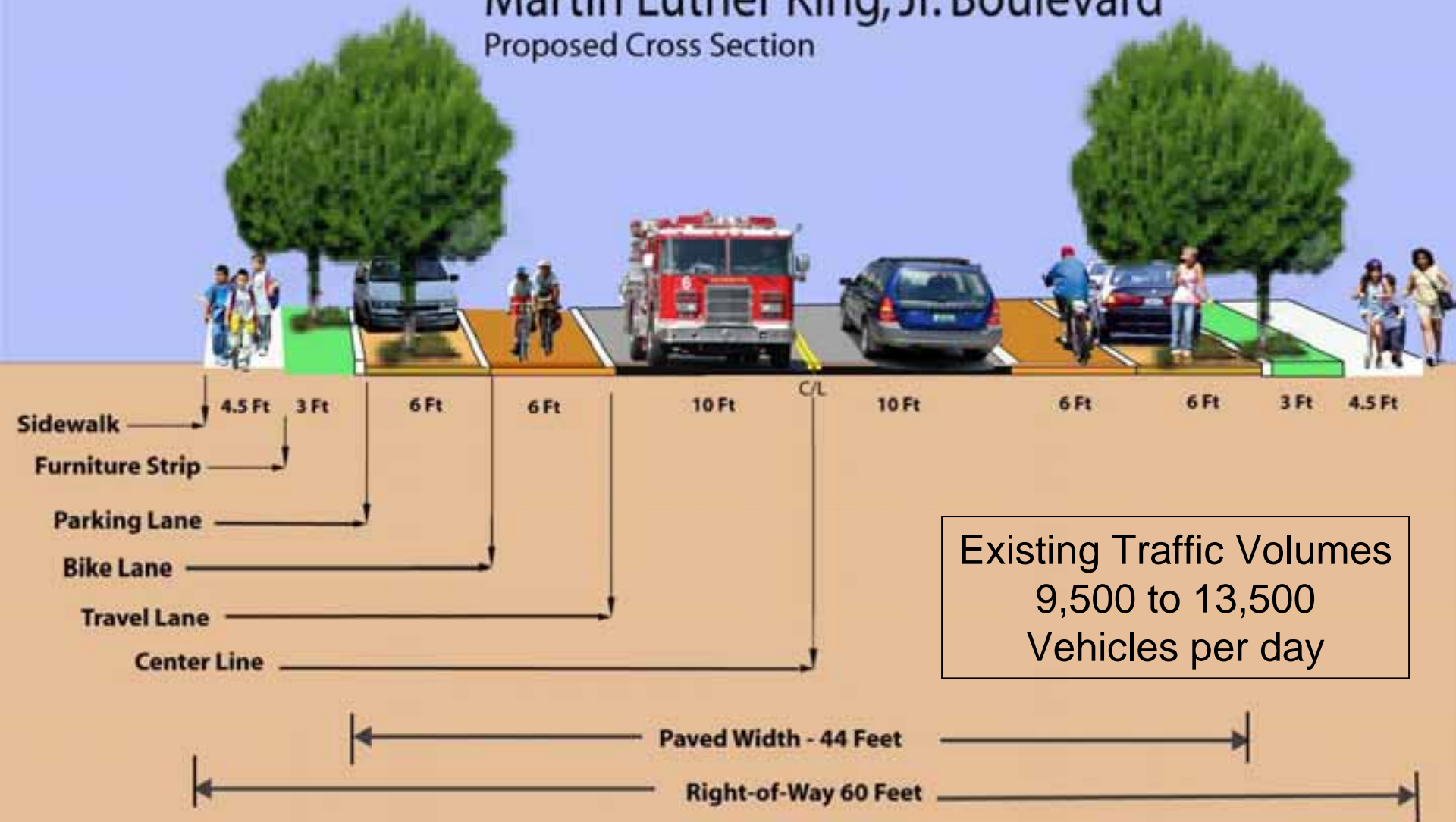


Cleveland, Ohio.

Recommendations

Martin Luther King, Jr. Boulevard

Proposed Cross Section





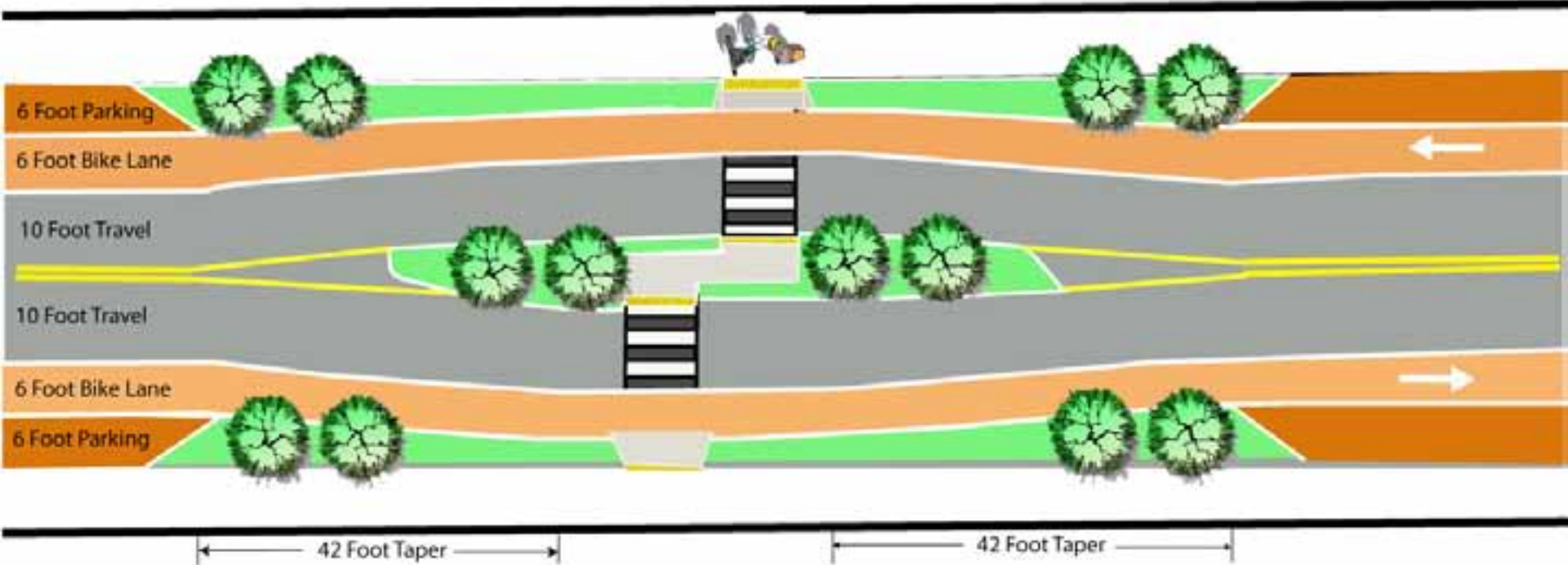


State Route 96, Willow Creek, CA





Crossing Oasis





14th Avenue and
MLK Boulevard —
Conventional
intersection



14th Avenue and
MLK Boulevard —
**Roundabout
intersection**





MLK Boulevard at
Broadway

MLK at Broadway Traffic Volume Trends

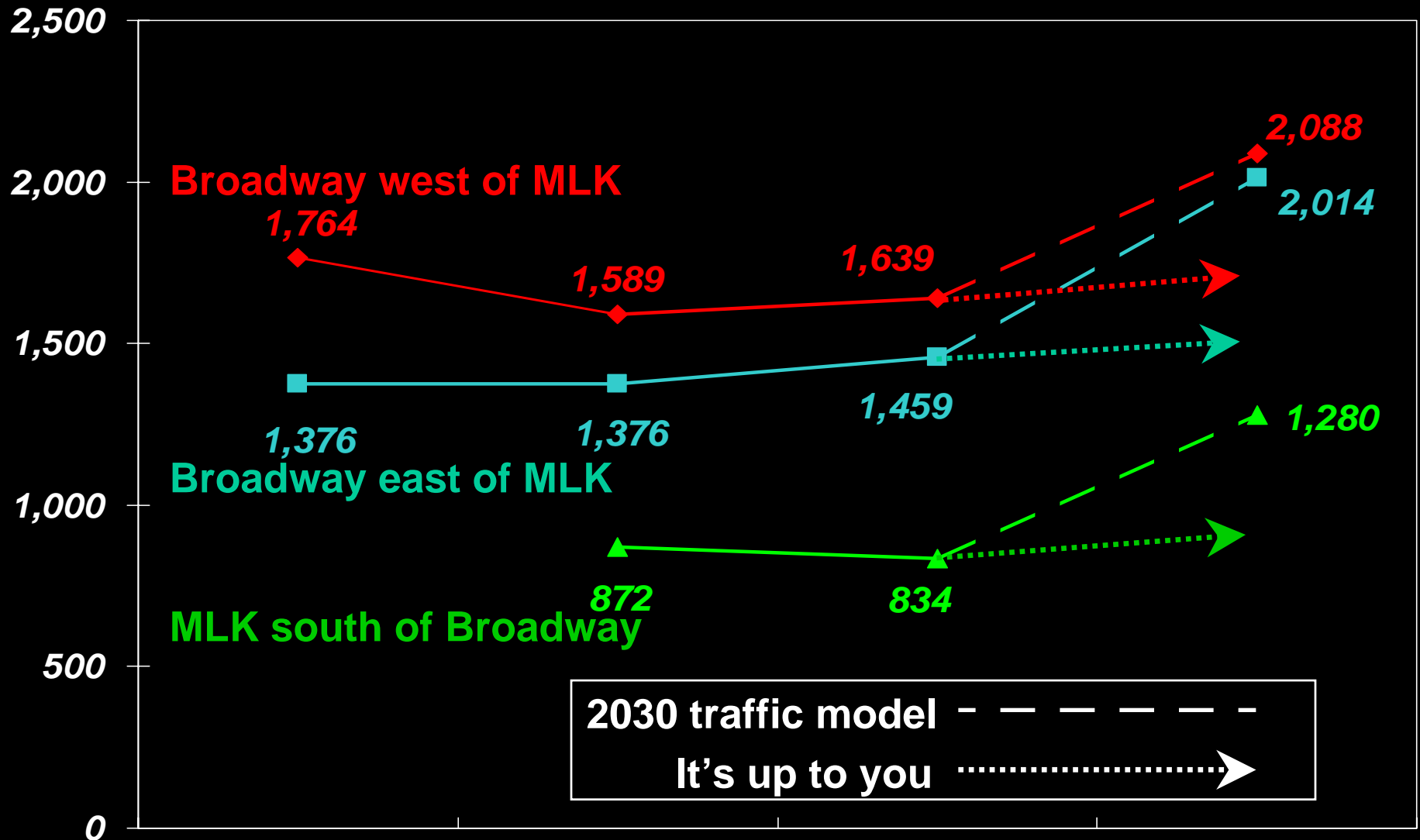
(PM Peak Hour 2-way Traffic Volume)

1988 (Oct.)

1994 (Apr./Feb.)

2005 (May)

2030??

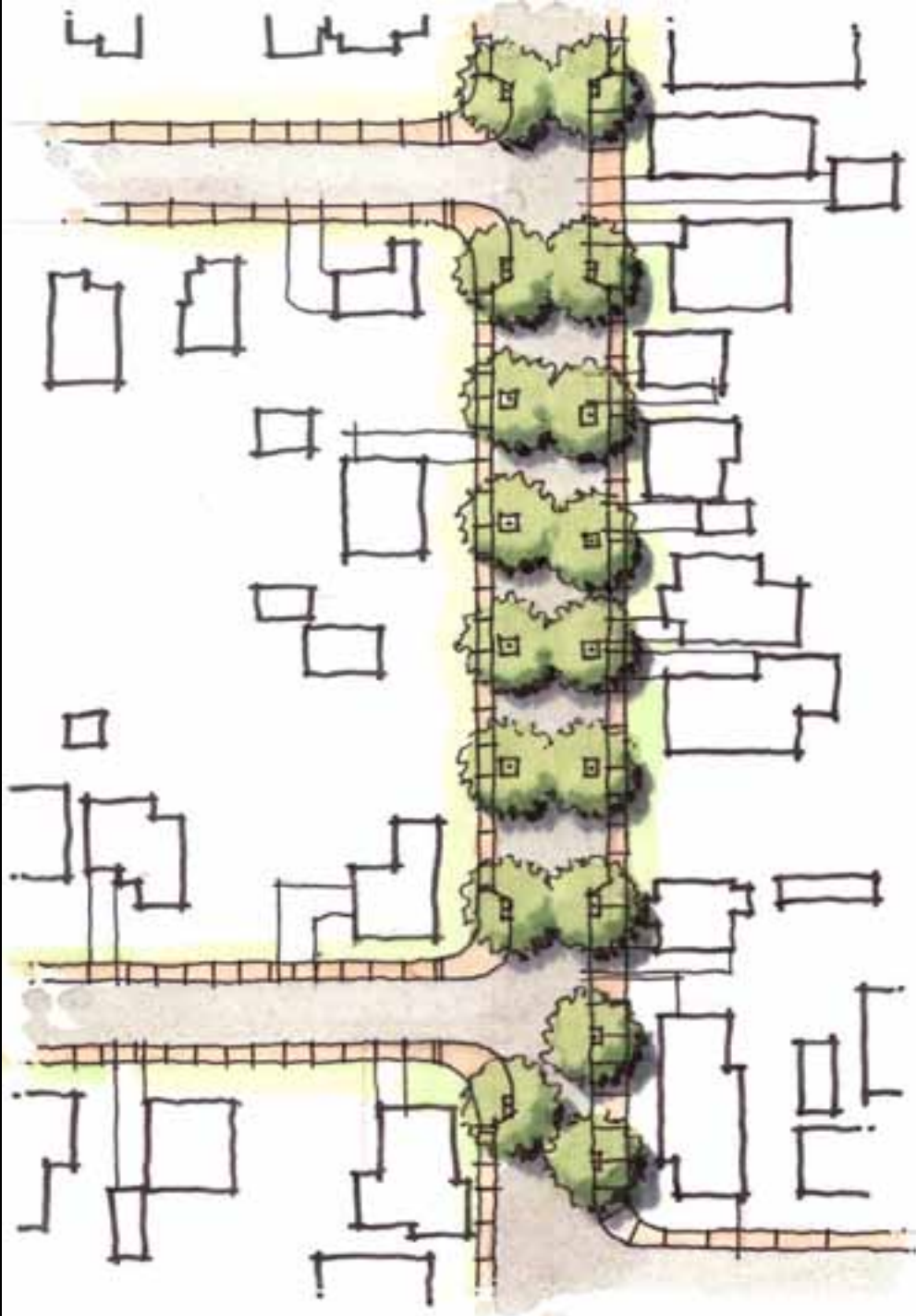




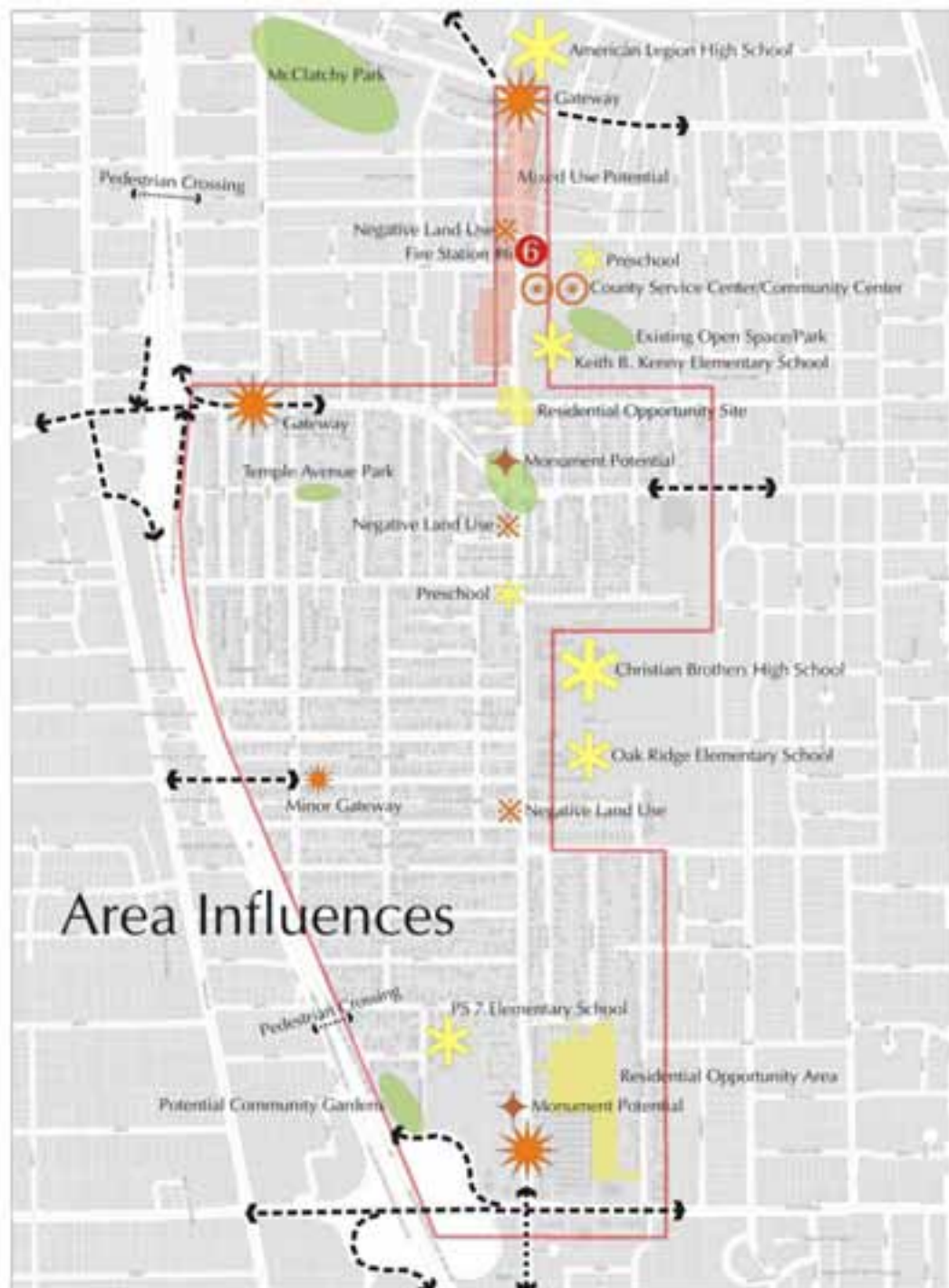
Martin Luther King, Jr. Boulevard, Looking North



Broadway, Looking East



Typical
Residential
Street







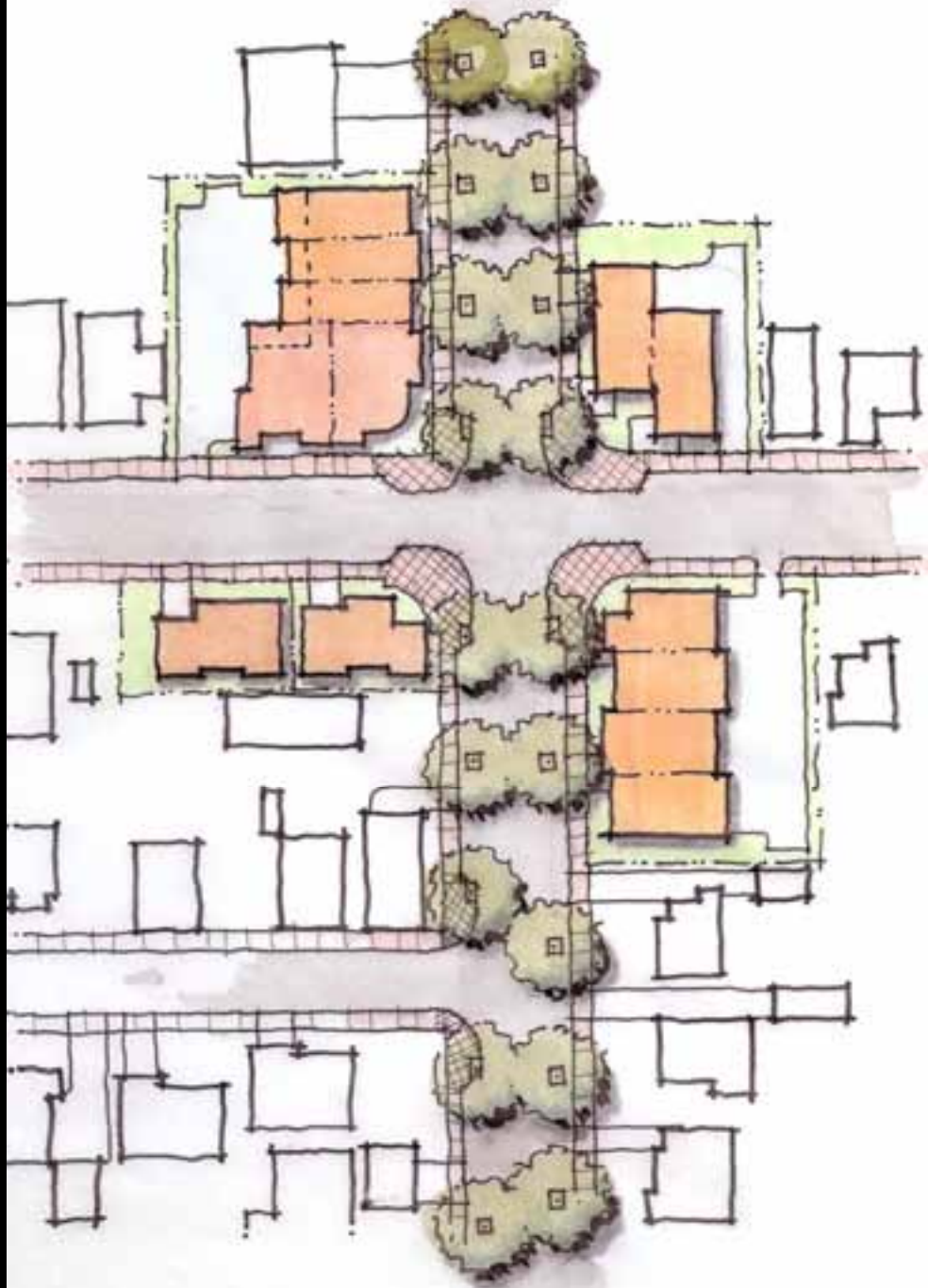
7th Avenue Alley



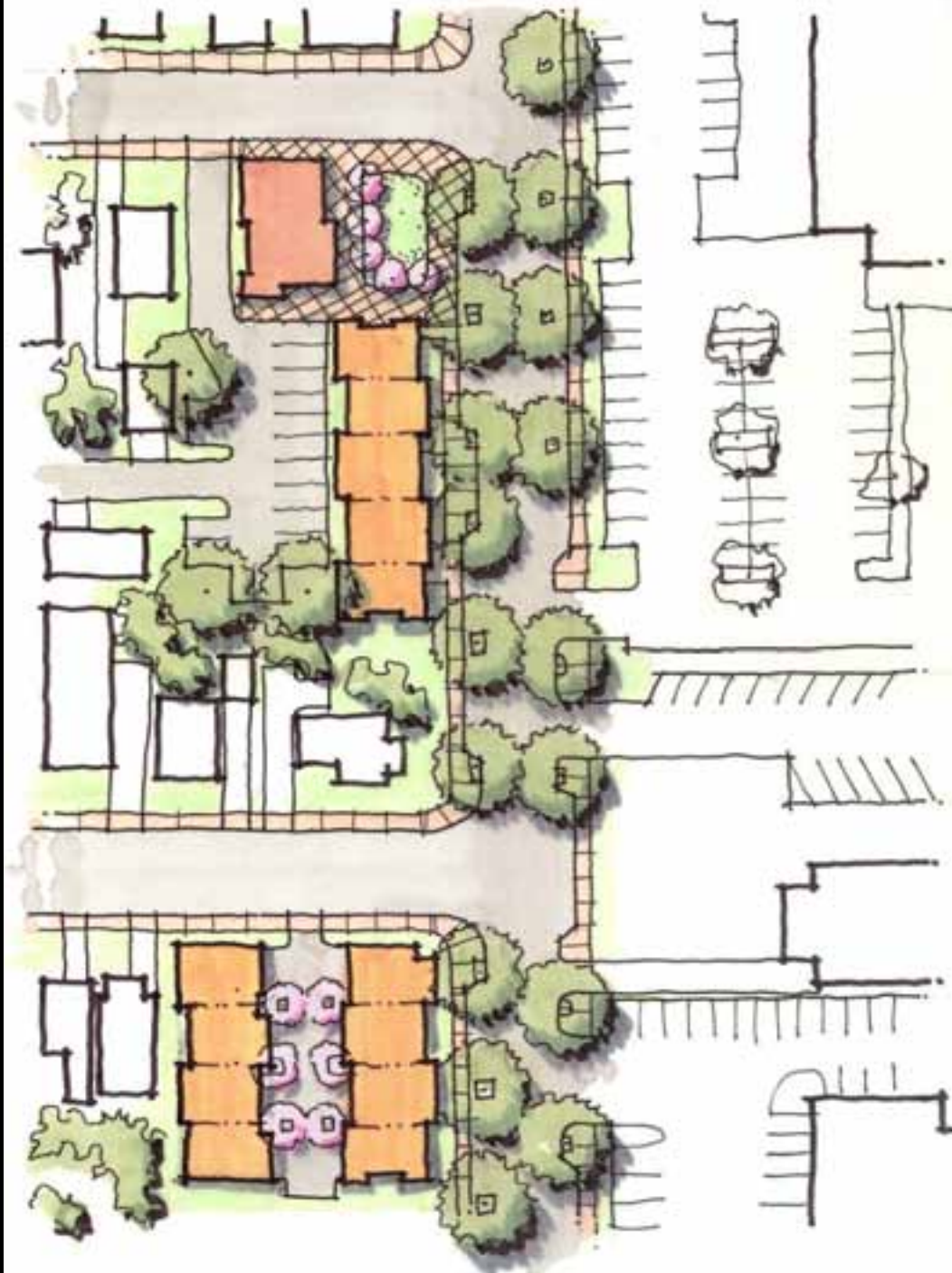
Market at 9th
Avenue and
MLK Boulevard

New Entrance to the
Community Center —
**Align driveway with 9th
Avenue**

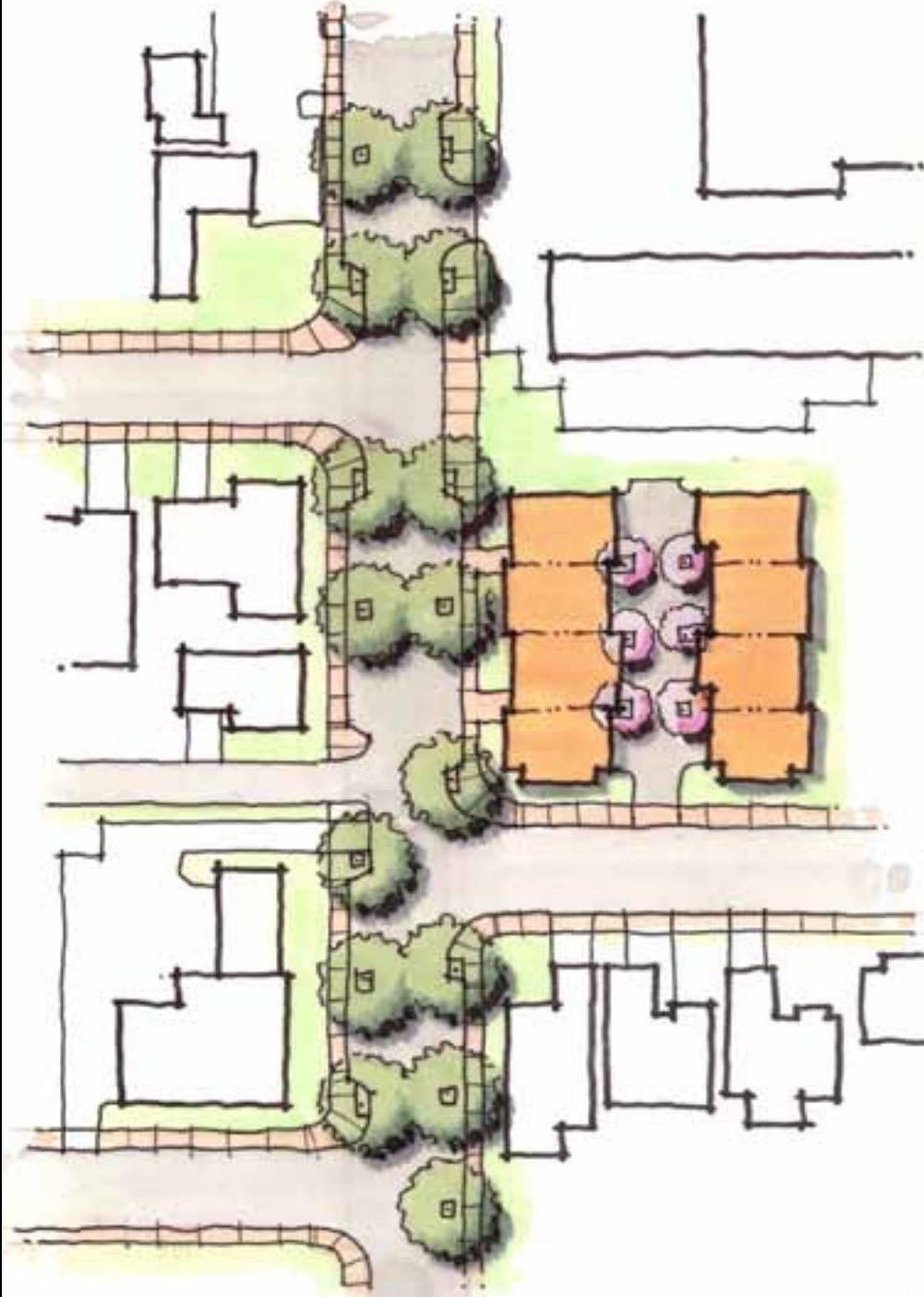




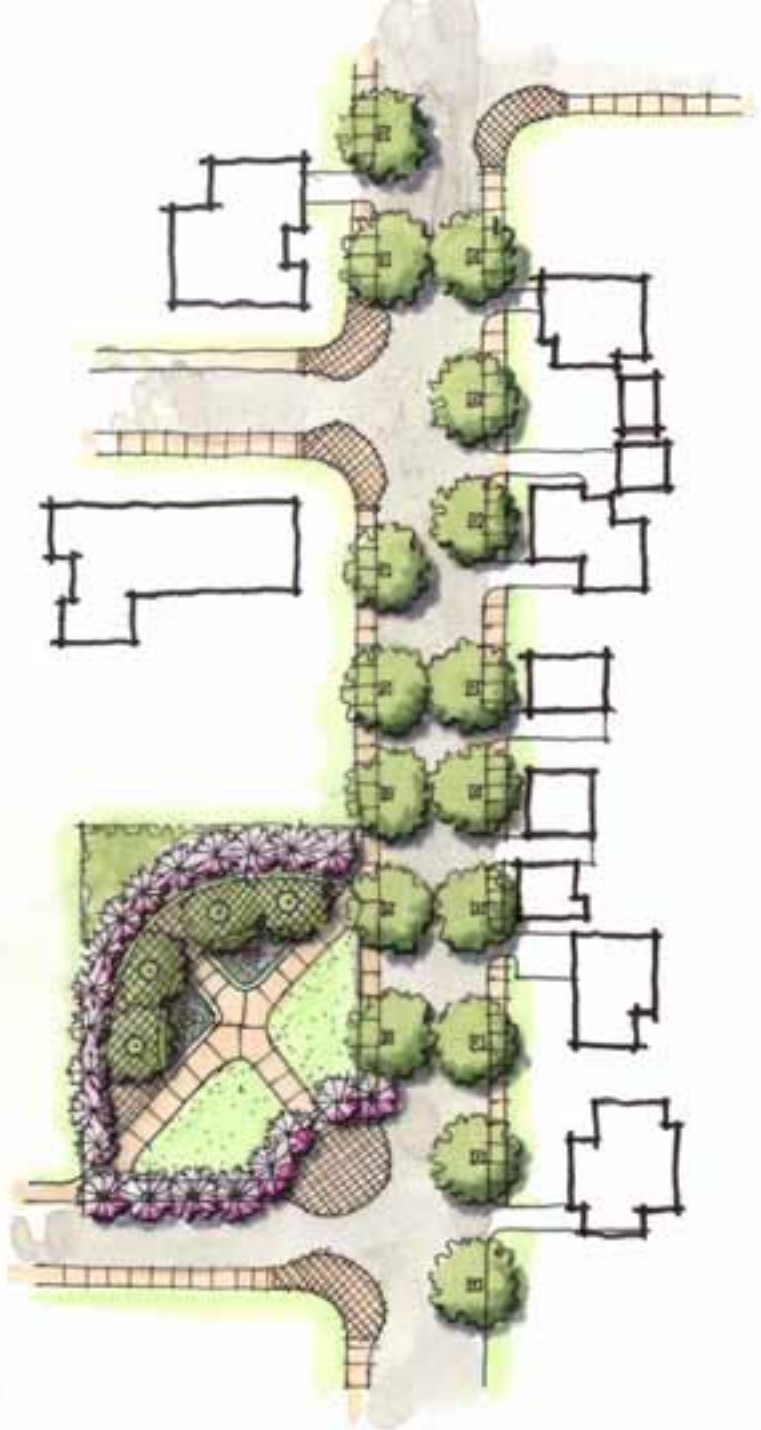
12th Avenue and
MLK Boulevard



19th Avenue and
MLK Boulevard



22nd Avenue and
MLK Boulevard



24th Avenue and
MLK Boulevard



Typical
Neighborhood
Garden

Closeup of Park in South Gateway



South Gateway to MLK Boulevard



Beauty and Art

I Love flowers
you should too.

Please don't pick
let us grow too!

















Martin Luther King, Jr. Boulevard, Near







Rex Burkholder

**Portland Area
Regional
Commissioner**



