



Student Farm Production & Learning Facility

LDA 141

*Abraham Salinas, Cassidy Craford,
Jake Muldoon, Matt Thomas,
Rasul Madyun, Virginia Saifer*



Student Farm Market Garden



UC DAVIS
AGRICULTURAL
SUSTAINABILITY INSTITUTE



Community Partners





*Where we've
been...*

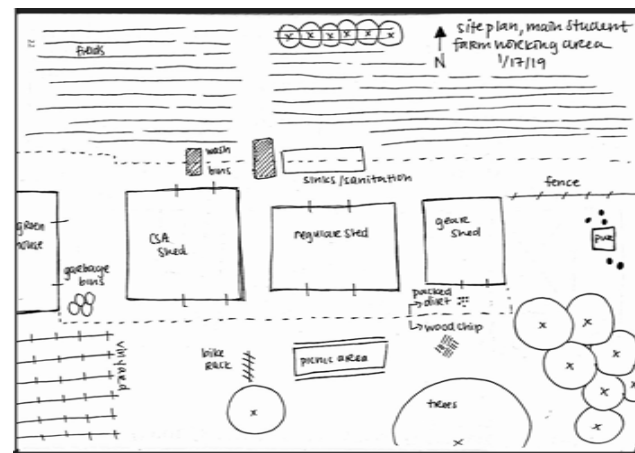
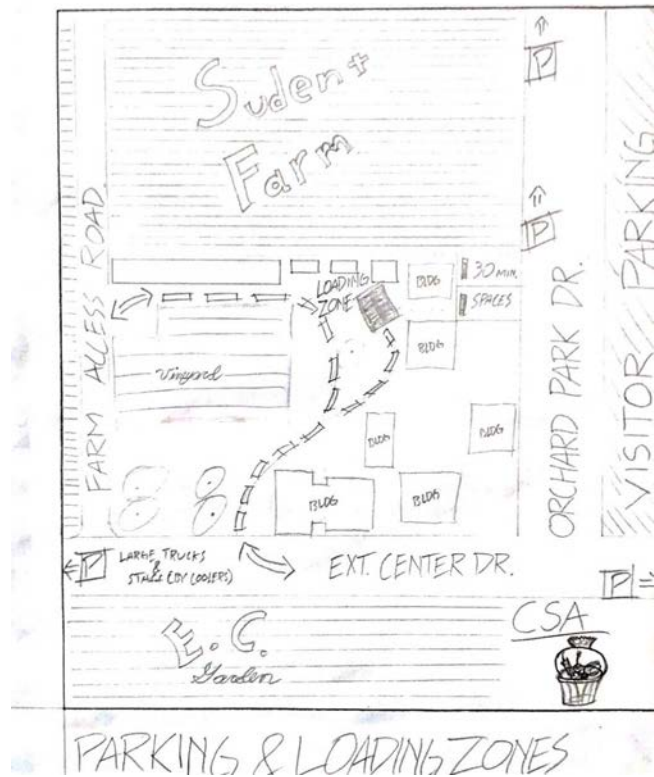
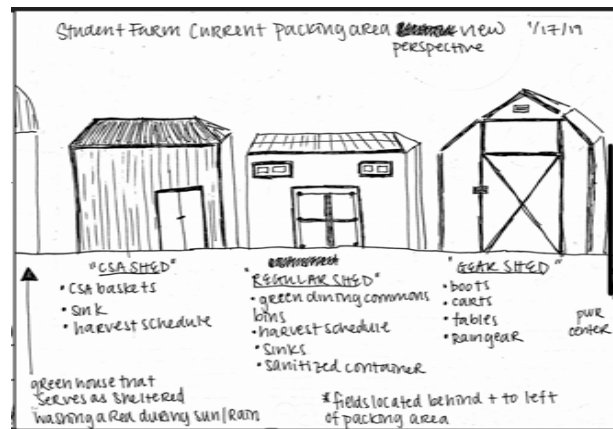
Farm Tour





*CSA Harvest
+
Flower
Project*

Site Analysis



FARM FORUM 2019

January 31st
6-8 PM
Bowley 101

Are you a farmer, community member, or student invested in the Student Farm? If so, please come out to our annual Farm Forum, a space to share ideas and visions for the UC Davis Student Farm!

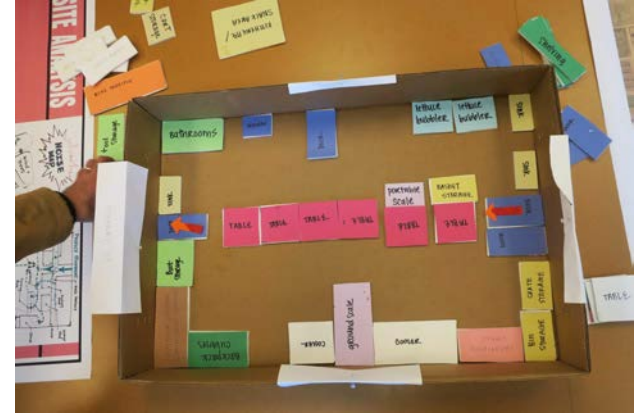
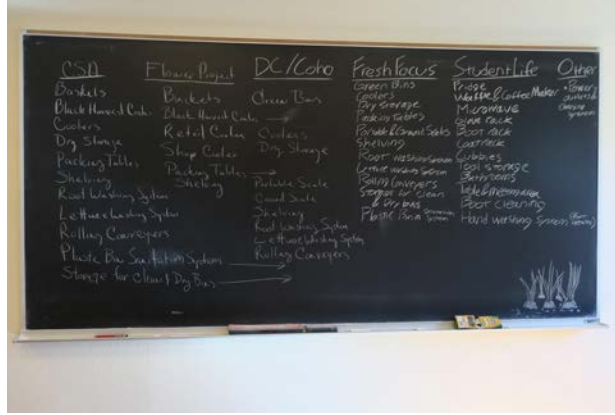
Come for the free burritos, stay for an open discussion about ways we can foster positive change here at the Farm!

SPACE EFFICIENCY

- MG AFTERNOON NON-HARVEST TASK DAYS**
- Packing of CSA**
 - pick-up & coolers all in the same space.
 - Better use of table space during CSA packing - differentiating FF, CSA, order, etc...
 - Cold storage for flowers. Lots of space for arrangements.
 - Bins sorted on CSA days
 - Arrange produce by date
 - better labeling - reusable tags
 - COMMUNICATION**
 - Clipboards? Whiteboard spreadsheet?
 - Communication (seasonality) - use of tables - info on what's in the cooler!
 - NEW TASK?**
 - bin management and cooler management in the afternoon?
 - returned before MG & FF
 - COOK- food waste**
 - chalk reduce
 - Action - Clipboards!**
 - Label Inventory Product
 - also tags: bin management

Farm Forum

Design Workshop



Opportunities + Constraints



Proposed Site





Being Green Is a Top Commitment

#3 in the World for Campus Sustainability

UC Davis is known for its commitment to the environment, locally and globally. You can see it in our teaching, research and dedication to sustainability on our own campus. In the [2018 UI GreenMetric World University Rankings](#), UC Davis is third in the world and first among U.S. universities.

We are focused on [achieving net-zero greenhouse gas emissions](#) with the help of our students, who bring great ideas and energy to the cause. See how the UC Davis community is keeping a sustainable environment a top commitment.

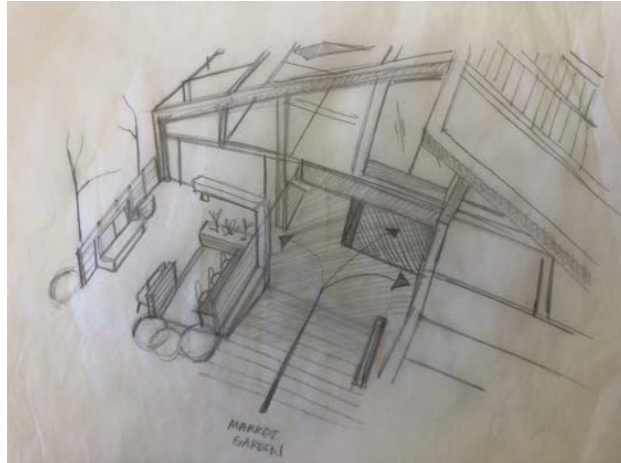
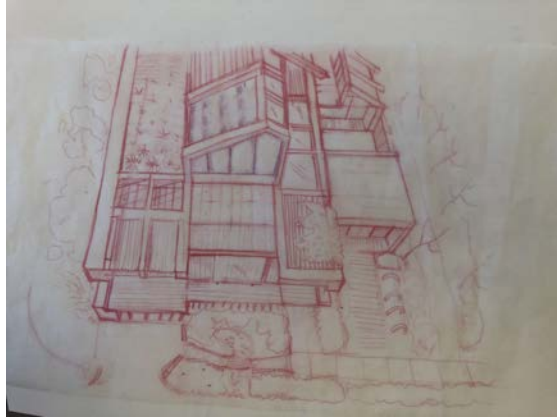
Community





*Design
Deliverables*

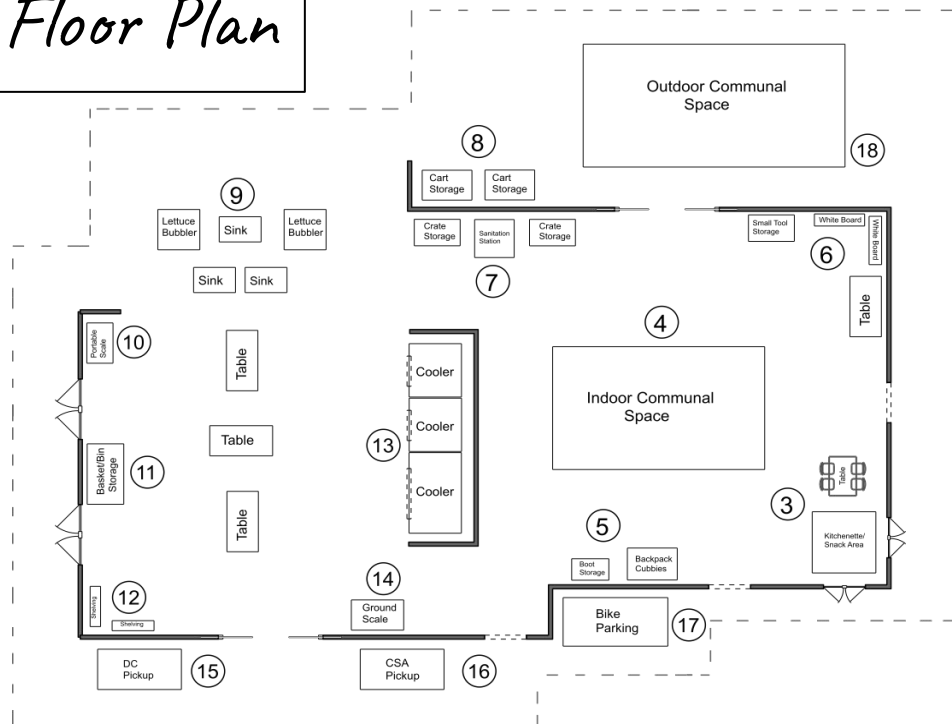
Perspectives





Section Cut

Proposed Floor Plan



Legend

1. Flower Project
 - Flower Cooler
 - Event Storage
 - Bucket Rack
 - Tables
 - Sink
2. Bathrooms
3. Kitchenette/Snack Area
4. Communal Space
5. Backpack Cubbies/Boot Storage
6. Harvest Prep
 - White Boards
 - Tables
 - Small Tool Storage
7. Crate Storage/Sanitation
8. Cart Storage
9. Produce Processing
 - Lettuce Bubblers
 - Sinks
 - Packing Tables
10. Portable Scale
11. Basket/Bin Storage
12. Shelving
13. Coolers
14. Ground Scale
15. DC Pickup
16. CSA Pickup
17. Bike Parking
18. Outdoor Communal Space

Extension Center Dr.



Certifications



Equipment

Flower Shop Equipment



77" WIDE REFRIGERATED FLORAL COOLER WITH THREE SLIDING GLASS DOORS

Sliding door models fit into tight spaces where there isn't enough aisle space for a door to swing open.

- Self contained - ready to plug in.
- Black anodized aluminum double pane glass self-closing doors.
- Automatic condensate evaporator.
- Adjustable coated wire shelving.
- Environmentally friendly refrigerants.
- Low E and argon-filled double panel glass doors.

Bush Refrigeration 1-877-907-8387 • Fax: 856-963-0770 • Contact:
info@bushrefrigeration.com • Website: www.bushrefrigeration.com

Stainless Steel Work Table



Regency 30" x 72" 16-Gauge 304 Stainless Steel Commercial Work Table with Undershelf

Stainless Steel Undershelf

An accessible undershelf is provided below the main work table to add extra room for storing crates or packing supplies as needed. In addition, this stainless steel shelf is conveniently adjustable to better suit your needs and boasts a weight capacity of approximately 410 lb.

<https://www.webstaurantstore.com/>

WebstaurantStore

Drum Washer



26" Drum Washer for Continuous or Batch Use

The drum washer is for a Continuous Flow or Batch Washing Operation.

This washing equipment is suitable for Potatoes, Carrots, Beets, Parsnips, etc.

- 160 Gallon Tank for Recirculating Water
- Low Maintenance



LOW PROFILE FLOOR SCALE



Stainless steel indicator with LED Display - Big, easy-to-read 3/4" numbers.



Ramps - Easy access for dollies, carts and hand trucks. Each ramp sold individually.

- Stainless steel feet and hardware with food-grade welds.
- LED display with 15' cable and mounting bracket included.
- L&M convertible • Full capacity tare.
- Auto zero tracking • Factory pre-calibrated.
- Powered by included 9' power cord.
- https://www.uline.com/BL_579/Stainless-Steel-Low-Profile-Floor-Scales

ULINE

Handout



STUDENT FARM MARKET GARDEN

PRODUCTION & LEARNING FACILITY

OVERVIEW

Since 1977, the Student Farm has provided a space for the UC Davis community to explore sustainable agriculture and food systems through in-field experiential learning. The Market Garden, a seven acre section of the farm, engages students in the process of harvesting, washing, and distributing produce to on-campus and off-campus communities. A new Production and Learning facility will allow the Student Farm to increase Market Garden produce production and expand the impact of its student-run programs.

VISION

As the Market Garden continues to grow, the Student Farm community wants to create new learning opportunities, increase produce donations and sales, and use their space more efficiently. A new Production and Learning Facility will help the Student Farm community meet these goals. We envision a flexible, indoor-outdoor, LEED, and Living Building certified space that echoes the welcoming and peaceful nature of the Student Farm.

This space will house Market Garden harvest production, produce storage, the CSA program, the Flower Project, community engagement programs, and student learning opportunities. Complete with useful, scale-appropriate movable equipment, the space will efficiently function as both a production facility and educational hub.

PHILANTHROPIC OPPORTUNITY

- Build a 5,000 sq. ft. indoor-outdoor Production and Learning Facility adjacent to the Student Farm Market Garden that includes production and storage equipment, communal space, and student amenities.
- Enhance experiential agricultural sustainability education opportunities for undergraduate and graduate students, researchers, and local youth.
- Expand the Student Farm's philanthropic impact by increasing the amount of produce donated to UC Davis students through the Fresh Focus program.
- Provide an improved site for UC Davis fundraising events, community engagement initiatives, sustainability programs, and research projects.

UC Davis is committed to preparing the next generation of agricultural leaders with a new kind of education. We invite the philanthropic partnership of our alumni and friends in transforming agricultural education.

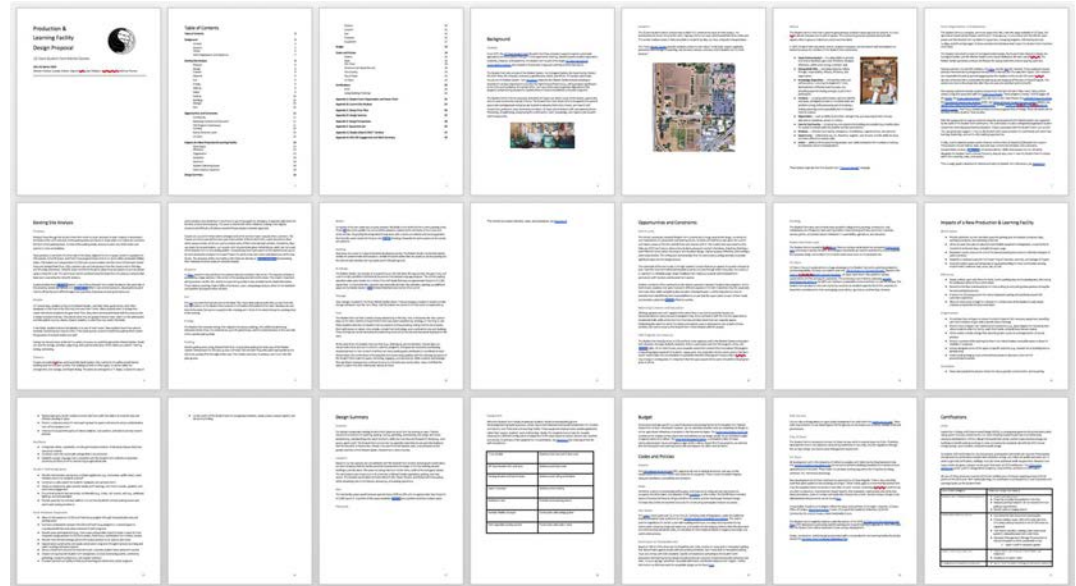
Design Proposal Document

Production & Learning Facility Design Proposal

UC Davis Student Farm Market Garden

LDA 141 Winter 2019

Abraham Salinas, Cassidy Craford, Virginia Saifer, Jake Muldoon, Rasul Madyun, Matthew Thomas



Thank you!

